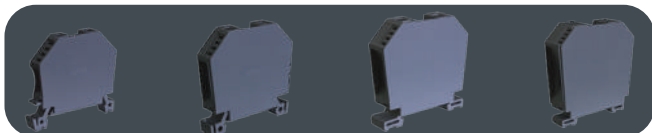


STANDARD TERMINALS - (POLYAMIDE 6.6)

Part Number	Description	Wire Size	Terminal Width	Rated Current
43408	2,5mm Terminal	0,5-2,5mm	5mm	24 Amps
43409	4mm Terminal	0,5-4mm	6mm	32 Amps
43401	6mm Terminal	0,5-6mm	7mm	41 Amps
43402	10mm Terminal	1,5-10mm	9mm	57 Amps
43403	16mm Terminal	2,5-25mm	12mm	101 Amps
43404	35mm Terminal	6-50mm	16mm	150 Amps
43405 *	70mm Terminal	16-70mm	26mm	192 Amps

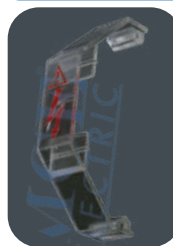
*Fully insulated (No end plate Required)

END PLATES FOR STANDARD TERMINALS - (POLYAMIDE 6.6)



43010	2,5mm & 4mm End Plate
43011	6mm & 10mm End Plate
43013	16mm End Plate
43014	35mm End Plate

PROTECTIVE COVERS FOR STANDARD TERMINALS



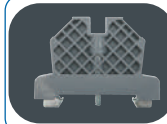
43035	2,5mm Protective Cover
43030	4mm Protective Cover
43031	6-10mm Protective Cover
43033	16mm Protective Cover
43034	35mm Protective Cover

DIVISION PLATES FOR STANDARD TERMINALS

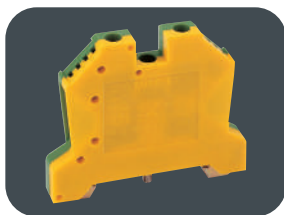


43015	2,5mm - 4mm Division Plate
43016	6mm - 10mm Division Plate

END STOPS FOR ALL TERMINALS

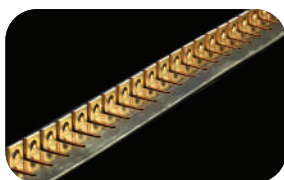


43442	Terminal End Stop (Metallic Clamp)
43444	ECONO Terminal End Stop



EARTH TERMINALS (GREEN/YELLOW) - (POLYAMIDE 6.6)

Part Number	Description	Wire Size	Terminal Width
43454	4mm Earth Terminal	0,5-4mm	7mm
43450	6mm Earth Terminal	0,5-6mm	8mm
43458	10mm Earth Terminal	1,5-10mm	10mm
43451	25mm Earth Terminal	1,5-25mm	12mm
43457	50mm Earth Terminal	2,5-50mm	16mm



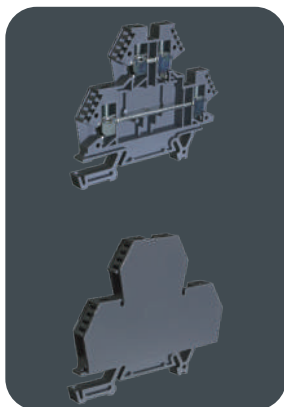
BRIDGE BAR PACKAGES - (COPPER NICKEL PLATED)

43525/24	2,5mm Bridge Bar	24 Poles
43520/24	4mm Bridge bar	24 Poles
43621/24	6mm Bridge bar	0,5m length
43022	10mm Bridge bar	0,5m length
43023	16mm Bridge bar	0,5m length
43024	35mm Bridge bar	0,5m length



FUSED TERMINALS - (POLYAMIDE 6.6)

43445 H	4mm fused terminal	10mm	Excl.5 x 20 fuse
43446 H	4mm disconnecting terminal	10mm	including link



TWO & THREE TIER TERMINALS - (POLYAMIDE 6.6)

Part Number	Description	Wire Size	Terminal Width	Rated Current
43550	4mm two tier terminal	0,5-4mm	6mm	32 Amps
43504	2,5mm three tier terminal	0,5-2,5mm	5,3mm	24 Amps

ACCESSORIES

END PLATES FOR TWO TIER TERMINALS - (POLYAMIDE 6.6)

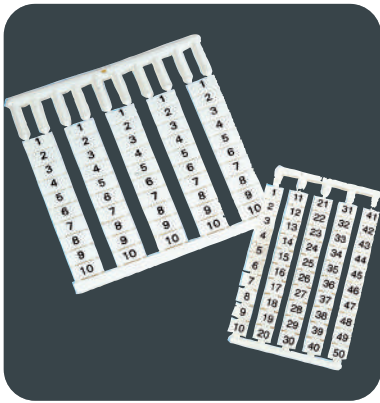
43096 4mm End Plate

PROTECTIVE COVERS FOR TWO TIER TERMINALS - (POLYCARBONATE)

43084 4mm Protective Cover

END PLATES FOR THREE TIER TERMINALS - (POLYAMIDE 6.6)

43542 2,5mm End Plate



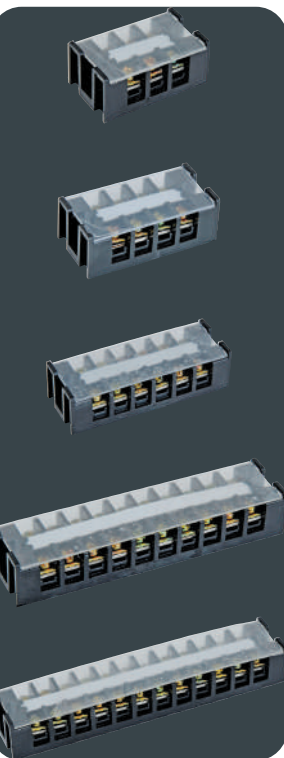
TERMINAL NUMBER MARKERS - 10 MARKERS PER STRIP

43192/*	Terminal number marker	2,5-70mm
* = 0, 1, 2, 3, 4, 5, 6, 7, 8, 9		
43192/*	Terminal alphabet marker	2,5-70mm
* = A, B, C, D, E, F, G, H, I, J, K, L, M, N, O, P, Q, R, S, T, U, V, W, X, Y, Z		
43192/*	Terminal marker	2,5 - 70mm
* = +, -, ER(Earth Symbol)		
43192	Blank Marking Tag	2,5mm
43196	Blank Marking Tag	4 - 70mm
43541	Three Tier blank marking tag	
43192	Terminal marker	2,5-70mm



DIN RAIL TERMINALS WITH COVERS

Part Number	Description	Wire Size	Poles	Rated Current
IN12BK	Terminal Block	2,5mm	2 Way	20 Amps
IN13SBK	Terminal Block	2,5mm	3 Way	15 Amps
IN20BK	Terminal Block	4,0mm	3 Way	30 Amps
IN30BK	Terminal Block	10mm	3 Way	50 Amps
IN411S	Terminal Block	16mm	1 Way	60 Amps
IN60BK	Terminal Block	25mm	1 Way	90 Amps
IN100K	Terminal Block	35mm	1 Way	130 Amps
IN200K	Terminal Block	95mm	1 Way	240 Amps
IN400K	Terminal Block	195mm	1 Way	370 Amps



BASE MOUNT TERMINALS WITH COVERS

Part Number	Description	Wire Size	Poles	Rated Current
TB-25A-3P	Terminal Block	2,5mm	3 Way	25 Amps
TB-25A-4P	Terminal Block	2,5mm	4 Way	25 Amps
TB-25A-6P	Terminal Block	2,5mm	6 Way	25 Amps
TB-25A-10P	Terminal Block	2,5mm	10 Way	25 Amps
TB-25A-12P	Terminal Block	2,5mm	12 Way	25 Amps

BASE MOUNT TERMINALS WITH COVERS

Part Number	Description	Wire Size	Poles	Rated Current
TB-35A-3P	Terminal Block	4mm	3 Way	35 Amps
TB-35A-4P	Terminal Block	4mm	4 Way	35 Amps
TB-35A-6P	Terminal Block	4mm	6 Way	35 Amps
TB-35A-10P	Terminal Block	4mm	10 Way	35 Amps
TB-35A-12P	Terminal Block	4mm	12 Way	35 Amps