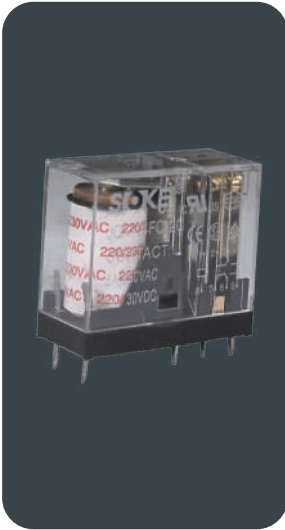


PLUG IN RELAY

12VAC, 24VAC, 110VAC, 230VAC, 12VDC, 24VDC, 110VDC



JQX-14FC

2 C/Over PCB 8 Pin Relay

Contact rating: 5 Amps

12VAC, 24VAC, 110VAC

,230VAC

12VDC, 24VDC

110VDC

*Specify Voltage when Ordering

JQX-14FC BASE



SRB-08E

Surface/Din mounting screw terminal base for JQX-14FC

Complete with Relay Holding Clips

PLUG IN RELAY - AVAILABLE IN AC OR DC



JQX-13F-LY2C

2 C/Over 8 Pin Plug-in Relay 10 Amps
Available in AC OR DC

*Voltages Available

12, 24, 48, 110 & 230VAC

12, 24, 48 & 110VDC

*Please specify

JQX-13F-LY2C BASE



PTF08A

Surf/Din mounting screw terminal base for JQX-13F-LY2C

PLUG IN RELAY - AVAILABLE IN AC OR DC



JQX-13F-LY3C

3 C/Over 11 Pin Plug-in Relay 10 Amps
Available in AC OR DC

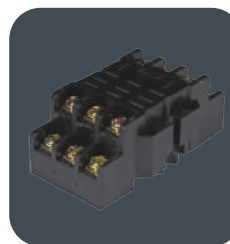
*Voltages Available

12, 24, 48, 110 & 230VAC

12, 24, 48 & 110VDC

*Please specify

JQX-13F-LY3C BASE



PTF11A

Surf/Din mounting screw terminal base for JQX-13F-LY3C

PLUG IN RELAY - AVAILABLE IN AC OR DC



JQX-13F-LY4C

4 C/Over 14 Pin Plug-in Relay 10 Amps
Available in AC OR DC

*Voltages Available

12, 24, 48, 110 & 230VAC

12, 24, 48 & 110VDC

*Please specify

JQX-13F-LY4C BASE



PTF14A

Surf/Din mounting screw terminal base for JQX-13F-LY4C

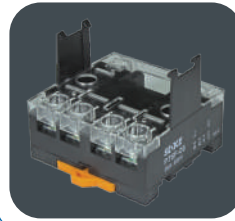
PLUG IN RELAY - AVAILABLE IN AC OR DC



JQX-76F-TU-2A
2 X N/O 6 Pin Plug in Relay 25Amps

*Voltages Available
12, 24, 48, 110 & 230VAC
12, 24, 48 & 110VDC
400VAC
*Please specify

JQX-76F-TU-2A BASE



P76F-06
Square 6 Pin Base for JQX-76F-TU-2A

DIN MOUNT RELAY - AVAILABLE IN AC OR DC



JQX-76F-BLD2
2 X N/O Din mount Relay 25Amps

*Voltages Available
12, 24, 48, 110 & 230VAC
12, 24, 48 & 110VDC
400VAC *Please specify

PLUG IN RELAY - AVAILABLE IN AC OR DC



JQX-10F-2
2 C/Over 8 Pin Plug-in Relay 10Amps

*Voltages Available
12, 24, 48, 110 & 230VAC
12, 24, 48 & 110VDC
*Please specify

PLUG IN RELAY - AVAILABLE IN AC OR DC



JQX-10F-3
3 C/Over 11 Pin Plug-in Relay 10Amps

*Voltages Available
12, 24, 48, 110 & 230VAC
12, 24, 48 & 110VDC
*Please specify

BASE



PF-083A
8 Pin Base for JQX-10F-2
Screw terminal

BASE



10FF-8
8 Pin Base for JQX-10F-2
Screw terminal

BASE



PF-113A
11 Pin Base for JQX-10F-3
Screw terminal

BASE



10FF-11
11 Pin Base for JQX-10F-3
Screw terminal

RELAYS WITH LED, TEST BUTTON AND FLAG INDICATOR

PLUG IN RELAY - AVAILABLE IN AC OR DC



JQX-13FKF-2CL
2 C/Over 8 Pin Plug-in Relay 5 Amps

*Voltages Available
12, 24, 48, 110 & 230VAC
12, 24, 48 & 110VDC
*Please specify

JQX-13F-KF-2CL BASE



SKB-08E
Surf/Din mounting screw terminal base
for JQX-KF-2CL
Complete with Relay Holding
Clips

PLUG IN RELAY - AVAILABLE IN AC OR DC



JQX-13FKF-4CL
4 C/Over 14 Pin Plug-in Relay 5 Amps

*Voltages Available
12, 24, 48, 110 & 230VAC
12, 24, 48 & 110VDC
*Please specify

JQX-13F-KF-4CL BASE



SKB-14E
Surf/Din mounting screw terminal base
for JQX-KF-4CL
Complete with Relay Holding
Clips