

EMERGENCY STOP

ZS16-V1R



Latching E/Stop - Twist to release
1NC Red - (3A @ 230VAC) (1A @ 30VDC)

BUZZER

AD-16Y-U



24VAC/DC BUZZER Black

PILOT LIGHTS

ND16*-*



16mm LED Pilot Light *Add colour of lens (red, blue, yellow, green or white) - *Add Voltage (12V; 24V; 110V; 230V)

SELECTOR SWITCHES - (3A @ 230VAC) (1A @ 30VDC)

X16Y-11Z/2



2 Pos. Selector Switch 1NO Black

X16Y-22Z/3



3 Pos. Selector Switch 1NO Black

MDX-12C



12mm NEON Pilot Light 230V

KEY SWITCHES

Y16-11Z/2

2 Pos. Key Switch - Remove in Off
1NO Black
(3A @ 230VAC) (1A @ 30VDC)



Y16-22Z/3

3 Pos. Key Switch - Remove in Off
2NO Black
(3A @ 230VAC) (1A @ 30VDC)



PROTECTIVE COVER

AD-16-SC



Square Protective cover ONLY

AD-16-RC



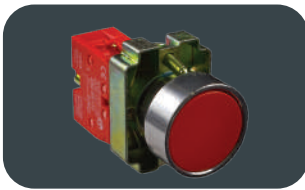
Rectangular Protective cover ONLY

SPARE LAMPS - (ONLY APPLY TO THE AD RANGE OF PUSHBUTTONS)

AD-A-*	12V	Miniature lamp	● ● ● ●	-
AD-B-*	24V	Miniature lamp	● ● ● ●	-
AD-F-*	110V	Miniature lamp	● ● ● ●	-
AD-M-*	230V	Miniature lamp	● ● ● ●	-
AD-Q-*	400V	Miniature lamp	● ● ● ●	-

*Add colour of lamp (red, blue, yellow or green)

22mm STEEL PUSHBUTTONS

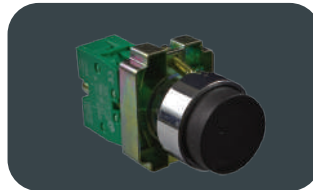


- 11 ○ NO
- 21 ● NO
- 31 ● NO
- 42 ● NC
- 51 ● NO
- 61 ● NO

XB2-BA

Flat Head Pushbutton 1 NO or NC
*Please specify colour

22mm STEEL EXTENDED HEAD PUSHBUTTONS

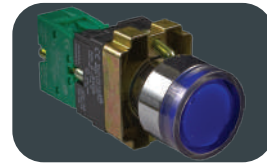


- 11 ○ NO
- 21 ● NO
- 31 ● NO
- 42 ● NC
- 51 ● NO
- 61 ● NO

XB2-BL

Extended Head Pushbutton 1 NO or NC
*Please specify colour

22mm STEEL ILLUMINATED PUSHBUTTONS



- 3161 ○ NO
- 3361 ● NO
- 3461 ● NC
- 3561 ● NO
- 3661 ● NO

XB2-BW

Illuminated Pushbutton LED
1 NO or NC
*Add Voltage (24V; 110V; 230V)

22mm STEEL ON-OFF PUSHBUTTONS

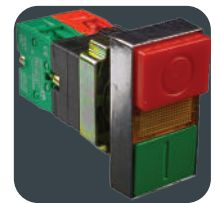
XB2-BL8425

Non-illuminated
On - Off Pushbutton
1 NO + 1 NC
Red/Green

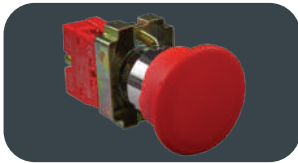


XB2-BW8465

Illuminated On-Off Pushbutton LED
1 NO + 1 NC
Yellow INDICATION
*Add Voltage (24V; 110V; 230V)

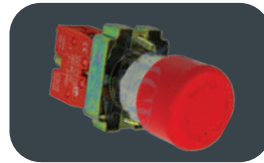


EMERGENCY STOPS



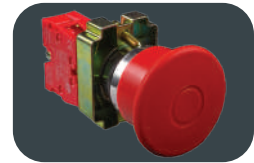
XB2-BC42

Non-latching E/Stop - 40mm 1 NC Red



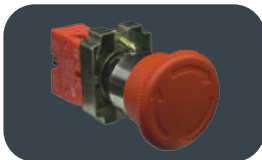
XB2-BS442

Latching E/Stop - Twist to release -30mm 1 NC Red



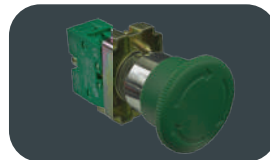
XB2-BT42

Push - Pull E/Stop - 40mm 1 NC Red



XB2-BS542

Latching E/Stop - Twist to release -40mm 1 NC Red



XB2-BS542-G

Latching E/Stop - Twist to release -40mm 1 NO Green



XB2-BS142

Latching E/Stop - Key operated -40mm
1 NC Red



XB2-BS642

Latching E/Stop -
Twist to release - 60mm
1 NC Red



XB2-BS242

Latching E/Stop -
Key Operated - 60mm
1 NC Red

SELECTOR SWITCHES



XB2-BD21

2 Pos. Selector Switch
- Short Handle
1 NO Black

XB2-BD41

2 Pos. Selector Switch
- Spring Return
1 NO Black



XB2-BD33

3 Pos. Selector Switch -
Short Handle 2 NO Black

XB2-BD53

3 Pos. Selector Switch
- Spring Return 2 NO
Black



XB2-BJ21

2 Pos. Selector Switch -
Long Handle
1 NO Black

XB2-BJ33

3 Pos. Selector Switch -
Long Handle
2 NO Black

KEY SWITCHES



XB2-BG21

2 Pos. Key Switch - Remove in Off

1 NO Black

XB2-BG41

2 Pos. Key Switch - Remove in 2 Pos.

1 NO Black

XB2-BG61

2 Pos. Spring Return Key Switch - Remove in Off

1 NO Black



XB2-BG03

3 Pos. Key Switch - Remove in 3 Pos.

2 NO Black

XB2-BG33

3 Pos. Key Switch - Remove in Off

2 NO Black

XB2-BG73

3 Pos. Spring Return Key Switch - Remove in Off

2 NO Black

PILOT LIGHTS - MULTI VOLTAGE - BUILT IN TRANSFORMER



XB2-BV7

Pilot Light 24V-220VAC LED

*Please specify voltage & colour

1	○	W
3	●	G
4	●	R
5	●	Y
6	●	B

LED PILOT LIGHTS



AD22-DS-

One Piece multi chip
22mm LED Pilot light
24VAC/DC,
110VAC/DC, 230VAC
ONLY

*Please specify voltage & colour

W	○
G	●
R	●
Y	●
B	●

ECONOMY PUSHBUTTONS



XB7-EA

Economy Pushbutton 1NO,

RED = 1 NC

(10A @ 250VDC)

*Please specify colour

11	○
21	●
31	●
42	●
51	●
61	●

LED ECONO PILOT LIGHTS

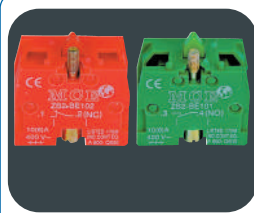


XB7-EV4-

Economy 22mm LED
Pilot light 24VAC/DC,
110VAC/DC
230VAC/DC. *Please
specify colour & voltage.

41	○
43	●
44	●
45	●
46	●

AUXILIARY CONTACT BLOCKS - (10A @ 400VAC)



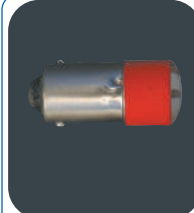
ZB2-BE101

Contact/Adder blocks NO Green

ZB2-BE102

Contact/Adder blocks NC Red

LED LAMPS - BA9 TYPE



LED-

8 Pin Cluster Type LED
12VAC/DC, 24VAC/DC,
48VAC/DC, 110VAC/
DC, 230VAC ONLY

*Please specify colour & voltage

W	○
G	●
R	●
Y	●
B	●

ACCESSORIES



ZB2-BASE

Fixing Ring for Pushbuttons

P-DEVICE-EH

Padlock Device for Extended P/Button

P-DEVICE-ES

Padlock Device for Emergency Stop

P-BOOT-G

Protective Neoprene Boot

P-BOOT-R

Protective Neoprene Boot

P-BOOT-C

Protective Neoprene Boot

P-BOOT-E-C

Protective Neoprene Boot for illum. & Ext Head P/Button

P-BOOT-8465

Protective Neoprene Boot for illum. On-Off P/Button

P-BOOT-8425

Protective Neoprene Boot for On-Off P/Button

Fixing Ring for Pushbuttons

Padlock Device for Extended P/Button

Padlock Device for Emergency Stop

Protective Neoprene Boot

Protective Neoprene Boot

Protective Neoprene Boot

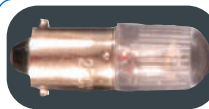
Protective Neoprene Boot for illum. & Ext Head P/Button

Protective Neoprene Boot for illum. On-Off P/Button

Protective Neoprene Boot for On-Off P/Button

-	-
-	Black
-	Red
-	Green
-	Red
-	Clear
-	Clear
-	Clear
-	Clear

NEON LAMPS - BA9 TYPE



G ●
R ●

BA9-230N-*

Neon Bulb 230V

Available in Red and Green.

*Please specify colour

BA9-110N-*

Neon Bulb, 110V

Available in Red and Green.

*Please specify colour

BA9-380N-*

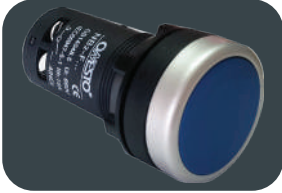
Neon Bulb, 400V

Available in Red and Green.

*Please specify colour

- Suitable for 22mm diameter hole
- Panel mounted. • Corrosion resistant - Ideal for coastal regions.
- Suitable for all control panel applications

PUSHBUTTONS



- BL ●
- G ●
- R ●
- Y ●
- B ●
- W ○

NB2-F11

Flat Head Pushbutton 22mm
1NO 1NC. Available in Black, green, red,
yellow, blue & white. *Please Specify

EMERGENCY STOP



04362

Latching E/Stop - 40mm 1 NC Red

SELECTOR SWITCH



04363

2 Pos. Selector switch - short handle 1 NO
Black

SELECTOR SWITCH



04366

2 Pos. Selector switch - long handle 1 NO
Black

SELECTOR SWITCH



04376

3 Pos. Selector switch - short handle 2 NO
Black

SELECTOR SWITCH



04386

3 Pos. Selector switch - long handle 2 NO
Black

AUXILIARY CONTACT BLOCKS



CONTACT RATING - (10A @ 400VAC)

04396

Auxiliary Contact Block 1 NO

04397

Auxiliary Contact Block 1 NC

EMERGENCY STOP & ENCLOSURE



04381

Emergency Stop - twist to release in yellow
enclosure

ENCLOSURE



04391

1 Hole Yellow empty enclosure

BUZZERS



04307

24 VAC/DC Panel Mount Buzzer 22mm

04309

230 VAC Panel Mount Buzzer 22mm

BUZZERS AND FLASHER UNITS



04317

24 VAC/DC Panel Mount
LED Flasher/Buzzer 22mm

04319

230 VAC Panel Mount
LED Flasher/Buzzer 22mm

NEW!



PILOT LIGHTS- ø 12mm - 220VAC

12FJ-R-*
12mm Pilot Lights 220VAC
*Please specify colour

G ●
R ●
B ●
W ○
Y ●

PUSHBUTTON- ø 16mm - 5A @ 250VAC



GQ16-SH
Convex Head Pushbutton 1NO
Screw Terminal

PUSHBUTTON- ø 16mm - 5A @ 250VAC



GQ16-RH
Raised Head Pushbutton 1NO
Screw Terminal

PUSHBUTTON- ø 16mm - 5A @ 250VAC



GQ16-FH
Flat Head Pushbutton 1NO
Screw Terminal

PUSHBUTTON- ø 22mm - 5A @ 250VAC



GQ22-11
Momentary Pushbutton 1NO+1NC
Pin Terminal

PUSHBUTTON- ø 22mm - 5A @ 250VAC



GQ22-11Z
Latching Pushbutton 1NO+1NC
Pin Terminal

ALUMINIUM ANODIZED EMERGENCY STOP



GQ19-11-ES
Latching Emergency Stop **19mm**
1NO & 1NC Pin Terminal. Twist to Release

PUSHBUTTONS ø 22mm - 5A @ 250VAC

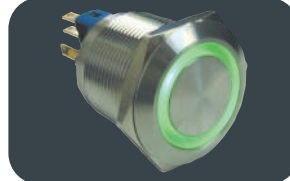


G ●
R ●
B ●
W ○
Y ●

GQ22-11E-*-B
Illuminated Momentary P/button 24VAC
1NO+1NC Pin Terminal

Available in Green, Red, Blue, White or Yellow. Please Specify.

PUSHBUTTONS ø 22mm - 5A @ 250VAC

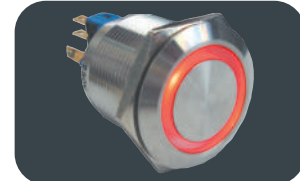


G ●
R ●
B ●
W ○
Y ●

GQ22-11E-*-F
Illuminated Momentary P/button 110VAC
1NO+1NC Pin Terminal

Available in Green, Red, Blue, White or Yellow. Please Specify.

PUSHBUTTONS ø 22mm - 5A @ 250VAC



G ●
R ●
B ●
W ○
Y ●

GQ22-11E-*-M
Illuminated Momentary P/button 230VAC
1NO+1NC Pin Terminal

Available in Green, Red, Blue, White or Yellow. Please Specify.

PUSHBUTTONS ø 22mm - 5A @ 250VAC

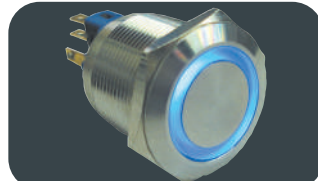


G ●
R ●
B ●
W ○
Y ●

GQ22-11ZE-*-B
Illuminated Latching P/button 24VAC
1NO+1NC Pin Terminal

Available in Green, Red, Blue, White or Yellow. Please Specify.

PUSHBUTTONS ø 22mm - 5A @ 250VAC



G ●
R ●
B ●
W ○
Y ●

GQ22-11ZE-*-F
Illuminated Latching P/button 110VAC
1NO+1NC Pin Terminal

Available in Green, Red, Blue, White or Yellow. Please Specify.

PUSHBUTTONS ø 22mm - 5A @ 250VAC



G ●
R ●
B ●
W ○
Y ●

GQ22-11ZE-*-M
Illuminated Latching P/button 230VAC
1NO+1NC Pin Terminal

Available in Green, Red, Blue, White or Yellow. Please Specify.

PVC EMPTY CONTROL STATIONS FOR 22mm CONTROL DEVICES



W
Y

MCE-1E 1 Hole Empty Station
Available in Yellow or Grey.
*Please specify colour



MCE-2E
2 Hole Empty Station Grey



MCE-3E
3 Hole Empty Station Grey



MCE-4E
4 Hole Empty
Station Grey



MCE-5E
5 Hole Empty
Station Grey



MCE-6E
6 Hole Empty
Station Grey

ALUMINIUM EMPTY CONTROL STATIONS FOR 22mm CONTROL DEVICES



ALB1
87 x 87 x 61 mm - 1 Hole Empty Station
Complete with Earth Stud



ALB2
122 x 75 x 75 mm - 2 Hole Empty Station
Complete with Earth Stud



G 120.68 3H
122 x 75 x 75 mm - 3 Hole Empty Station
Complete with Earth Stud



G 250.68 4H
252 x 87 x 75 mm -
4 Hole Empty Station
Complete with Earth Stud



G 250.68 5H
252 x 87 x 75 mm -
5 Hole Empty Station
Complete with Earth Stud

ALUMINIUM ENCLOSURES



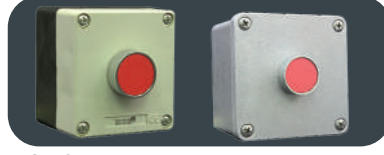
G 085.54	87 x 87 x 61mm - Enclosure
G 100.54	102 x 102 x 61mm - Enclosure
G 100.74	102 x 102 x 81mm - Enclosure
G 120.68	122 x 75 x 75mm - Enclosure
G 150.74	152 x 102 x 81mm - Enclosure
G 200.74	202 x 102 x 81mm - Enclosure
G 200.114	202 x 102 x 114mm - Enclosure
G 250.68	252 x 87 x 75mm - Enclosure
G 260.84	265 x 130 x 91mm - Enclosure
E 160.135	160 x 135 x 91mm - Enclosure
E 245.210	245 x 210 x 102mm - Enclosure
E 295.255	295 x 255 x 130mm - Enclosure
FCL.4	70 x 70 x 51mm - Enclosure
FCL.6	100 x 100 x 81mm - Enclosure

1 WAY CONTROL STATIONS



MCE-1
Grey PVC Enclosure 1 x Green pushbutton

MCE-1-A
Aluminium Enclosure 1 x Green pushbutton



MCE-2
Grey PVC Enclosure 1 x Red pushbutton

MCE-2-A
Aluminium Enclosure 1 x Red Pushbutton



MCE-3
Grey PVC Enclosure E/Stop Non Latching Mushroom head

MCE-3-A
Aluminium Enclosure E/Stop Non Latching Mushroom head

G ●
Y ●



MCE-4
Yellow or Grey PVC Enclosure with E/Stop Twist to release Mushroom head.
*Please specify colour

MCE-4-A
Aluminium Enclosure with E/Stop Twist to release Mushroom head



MCE-5
Grey PVC Enclosure E/Stop Key to release Mushroom head

MCE-5-A
Aluminium Enclosure E/Stop Key to release Mushroom head

2 WAY CONTROL STATIONS



MCE-6
Grey PVC Enclosure 1 x Green & 1 x Red Pushbutton

MCE-6-A
Aluminium Enclosure 1 x Green & 1 x Red Pushbutton



MCE-6A
Grey PVC Enclosure 1 x Green pushbutton & Emergency Stop - (Non latching)

MCE-6A-A
Aluminium Enclosure 1 x Green pushbutton & Emergency Stop - (Non latching)



MCE-7
Grey PVC Enclosure 1 x Green pushbutton & Emergency Stop-(latching)

MCE-7-A
Aluminium Enclosure 1 x Green pushbutton & Emergency Stop - (latching)

3 WAY CONTROL STATIONS



MCE-8
Grey PVC Enclosure 3 x Pushbuttons



MCE-8-A
Aluminium Enclosure 3 x Pushbuttons



MCE-9
Grey PVC Enclosure 3 x Pushbuttons



MCE-9-A
Aluminium Enclosure 3 x Pushbuttons



MCE-10
Grey PVC Enclosure 2 x Pushbuttons & Pilot Light



MCE-10-A
Aluminium Enclosure 2 x Pushbuttons & Pilot Light



MCE-11CS
Grey PVC Enclosure 3 x Illuminated pushbuttons



MCE-11CS-A
Aluminium Enclosure 3 x Illuminated pushbuttons

*SPECIAL COMBINATIONS CAN BE MADE ON REQUEST

EMERGENCY STOP ACCESSORIES



ESLOC
22mm Padlockable
Emergency stop
protection cover



ESL
22mm Emergency stop
label Yellow



ESPC
22mm Emergency stop
protection cover Yellow



PCS442
Emergency Stop Slotted
Shroud Yellow



PCS542
Emergency Stop
Lock Shroud Yellow

PANEL PLUGS AND REDUCING RINGS



PP-16
16mm Panel Plug Black
PP-22
22mm Panel Plug Black

R-3022
30mm to 22mm reducing ring
Black



*Control Device sold
separately

ZB2-LH	Legend Plate holder	Black
ZB2-AH	Auto - Hand	White
ZB2-AOH	Auto - O - Hand	White
ZB2-BL	Blank	White
ZB2-D	Down	White
ZB2-E/S	Emergency Stop	Red
ZB2-F	Forward	White
ZB2-I	Inch	White
ZB2-O	Off	White
ZB2-OO	Off - On	White
ZB2-ON	On	White
ZB2-RES	Re-set	White
ZB2-REV	Reverse	White
ZB2-SRT	Start	White
ZB2-STP	Stop	White
ZB2-UP	Up	White

Customised Labels can be made ON REQUEST

TOGGLE SWITCHES - 12mm ø - 16A @ 250VAC - Screw Terminals



T1021
Toggle Switch -
Single Pole
On/Off



T1121
Toggle Switch -
Single Pole
On/On



T1122
Toggle Switch -
Single Pole
On/Off/On



T1122B
Toggle Switch
- Spring return
Single Pole
On/Off/On



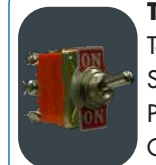
T1221
Toggle Switch -
Double Pole
On/Off



T1321
Toggle Switch -
Double Pole
On/On



T1322
Toggle Switch -
Double Pole
On/Off/On



T1121B
Toggle Switch
Spring return Single
Pole
On/On



T1021B
Toggle Switch
Spring return Single Pole
On/Off



T-BOOT
Toggle Switch Rubber
Boot

LATCHING TRIPLE POLE PUSHBUTTON STATIONS

LATCHING TRIPLE POLE PUSHBUTTON STATION - SURFACE MOUNT



BS-211B 10A Latching Pushbutton
- 3 Pole Grey
BS-215B 15A Latching Pushbutton
- 3 Pole Grey
BS-230B 30A Latching Pushbutton
- 3 Pole Grey



BS-215F
15A Latching Pushbutton - 3 Pole Grey
BS-230F
30A Latching Pushbutton - 3 Pole Grey

PENDANT CONTROLS FOR 1 SPEED CRANE APPLICATION, SINGLE DEPRESSION PUSH BUTTONS - 1 NO



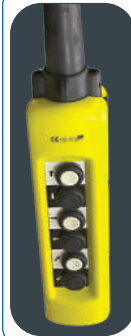
XAC-A271
2 Pushbuttons 1NO

XAC-A2713
2 Pushbuttons +
E/Stop 1NO



XAC-A471
4 Pushbuttons 1NO

XAC-A4713
4 Pushbuttons +
E/Stop 1NO



XAC-A671
6 Pushbuttons 1NO

XAC-A6713
6 Pushbuttons +
E/Stop 1NO



XAC-A871
8 Pushbuttons 1NO

XAC-A8713
8 Pushbuttons +
E/Stop 1NO



XAC-A1071
10 Pushbutton 1NO

XAC-A10713
10 Pushbutton + E/Stop 1NO



XAC-A1271
12 Pushbutton 1NO

XAC-A12713
11 Pushbutton + E/Stop 1NO

PENDANT CONTROLS FOR 1 SPEED CRANE APPLICATION, SINGLE DEPRESSION PUSH BUTTONS - 1 NO + 1 NC



XAC-A281
2 Pushbuttons

XAC-A2813
2 Pushbuttons + E/
Stop



XAC-A481
4 Pushbuttons

XAC-A4813
4 Pushbuttons + E/
Stop



XAC-A681
6 Pushbuttons

XAC-A6813
6 Pushbuttons + E/
Stop



XAC-A881
8 Pushbuttons

XAC-A8813
8 Pushbuttons + E/
Stop



XAC-A1081
10 Pushbuttons

XAC-A10813
10 Pushbuttons + E/Stop



XAC-A1281
12 Pushbuttons

XAC-A12813
11 Pushbuttons + E/Stop