



ADJUSTABLE FLUSH MOUNTING DISTRIBUTION BOARDS (GALVANISED TRAY)

DB1-12W-A-F	185(L) x 250(W) x 70(D)	IP41	12 Module	1 x 12 Way
DB1-15W-A-F	190(L) x 310(W) x 70(D)	IP41	15 Module	1 x 15 Way
DB1-18W-A-F	220(L) x 360(W) x 80(D)	IP41	18 Module	1 x 18 Way

SPARE FRONT COVERS FOR DB1 ADJUSTABLE BOARDS ONLY

FPC-12	Plastic front cover	IP41	12 Module	1 x 12 Way
FPC-15	Plastic front cover	IP41	15 Module	1 x 15 Way
FPC-18	Plastic front cover	IP41	18 Module	1 x 18 Way



FLUSH MOUNTING DISTRIBUTION BOARDS (PLASTIC TRAY/STEEL ARCHITRAVE)

DB-12W-SAF	315(L) x 330(W) x 90(D)	IP41	12 Module	1 x 12 Way
Architrave	335(L) x 350(W) x Flush			
DB-24W-SAF	440(L) x 330(W) x 90(D)	IP41	24 Module	2 x 12 Way
Architrave	460(L) x 350(W) x Flush			

PLASTIC SURFACE MOUNTING DISTRIBUTION BOARDS IP65



WDB-4	215(L) x 145(W) x 110(D)	IP65; 4 Module; 4 Way
WDB-6	215(L) x 180(W) x 110(D)	IP65; 6 Module; 6 Way
WDB-9	235(L) x 215(W) x 110(D)	IP65; 9 Module; 9 Way
WDB-13	305(L) x 285(W) x 140(D)	IP65; 13 Module; 13 Way

PLASTIC SURFACE MOUNTING DISTRIBUTION BOARDS IP65



WDB-26	445(L) x 285(W) x 140(D)	IP65; 26 Module; 26 Way
---------------	--------------------------	-------------------------

PLASTIC SURFACE MOUNTING DISTRIBUTION BOARDS IP65



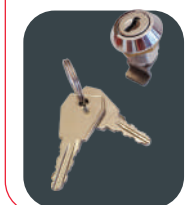
WDB-39	605(L) x 285(W) x 140(D)	IP65; 39 Module; 39 Way
---------------	--------------------------	-------------------------

PLASTIC SURFACE MOUNTING DISTRIBUTION BOARDS IP65



WDB-52	760(L) x 285(W) x 140(D)	IP65; 52 Module; 52 Way
---------------	--------------------------	-------------------------

LOCK FOR WDB DISTRIBUTION BOARDS



WDB-LOCK	Lock and keys for WDB'S
-----------------	-------------------------

ADAPTORS AND SCUSSION

A & S	Din Conversion Clips (Converts existing Mini rail to Din) (Packaged in Bags of 100 -NOT sold loose.)
------------------	---

DISTRIBUTION BOARD LABEL BOOK

DB-LABEL BOOK	Self adhesive labels for the marking of DB's
----------------------	--

DISTRIBUTION BOARD SCUSSION BLANKS

DB-001	Clip-in Blanking Strips - 1 way (Bag of 100)
DB-006	Clip-in Blanking Strips - 6 way



MODULAR SOCKETS (INTERCHANGEABLE)*

ONESTO MINI READY BOARDS

ORB-9WB

Hinged Ready Board + Switched Bulkhead + 3 x Plugs + 1 x KRC3-263 63A Earth Leakage + 2 x KC3-120 20A MCB's **MODULAR SOCKETS (INTERCHANGEABLE)***

ORB-9W

Hinged Ready Board + 3 x Plugs + 1 x KRC3-263 63A Earth Leakage + 2 x KC3-120 20A MCB's

NEW!



MODULAR SOCKETS (INTERCHANGEABLE)*

ONESTO MINI READY BOARDS

ORB-9WB-S001ZA

Hinged Ready Board + Switched Bulkhead + 2 x Single Switched Sockets + 1 x New ZA Socket + 1 x Shuko Socket + 1 x KRC3-263 63A Earth Leakage + 2 x KC3-120 20A MCB's

ORB-9W-S001ZA

Hinged Ready Board + 2 x Single Switched Sockets + 1 x New ZA Socket + 1 x Shuko Socket + 1 x KRC3-263 63A Earth Leakage + 2 x KC3-120 20A MCB's

NEW!



MODULAR SOCKETS (INTERCHANGEABLE)*

ONESTO MINI READY BOARDS

ORB-9WB-3ZA

Hinged Ready Board + Switched Bulkhead + 2 x Single Switched Sockets + 3 x New ZA Sockets + 1 x KRC3-263 63A Earth Leakage + 2 x KC3-120 20A MCB's

ORB-9W-3ZA

Hinged Ready Board + 2 x Single Switched Sockets + 3 x New ZA Sockets + 1 x KRC3-263 63A Earth Leakage + 2 x KC3-120 20A MCB's

NEW!



MODULAR SOCKETS (INTERCHANGEABLE)*

ONESTO MINI READY BOARDS

ORB-9WB-UZA

Hinged Ready Board + Switched Bulkhead + 2 x Single Switched Sockets + 1 x 5V 2A USB Socket + 2 x New ZA Sockets + 1 x KRC3-263 63A Earth Leakage + 2 x KC3-120 20A MCB's

ORB-9W-UZA

Hinged Ready Board + 2 x Single Switched Sockets + 2 x New ZA Sockets + 1 x 5V 2A USB Socket + 1 x KRC3-263 63A Earth Leakage + 2 x KC3-120 20A MCB's



SWIMMING POOL TRANSFORMER

SPT

12V 100VA Swimming pool Transformer.



PORTABLE DISTRIBUTION BOARD

CEE-MS01
PORTABLE DISTRIBUTION BOARD with Handle (Excludes MCB's & Sockets)

D.I.Y TO SUIT YOUR NEEDS. SPECIFY WHICH SOCKETS

ELECTRONIC FACTORY TIME SWITCH - IP65



EFT-1

IP65 Weatherproof 4 way surface distribution board fitted with a DTS-16C20A time switch. Switching contact: 1 changeover switch, Contact Rating: Resistive Load: 20A 250VAC, Inductive Load: 4A (230VAC). Ideal for factories, schools etc. Size: 220(L) x 282(W) x 120(D)

SWIMMING POOL BOARDS - IP65



SPE-1

Hinged Weatherproof Lockable IP65 Board complete with: Transformer, Programmable Time Switch, 2 x 3kA MCB's, Isolator, & Pre-moulded knockouts. Size: 220(L) x 282(W) x 120(D)mm

PDB-9W 9 Way IP65 Empty Swimming Pool Board

SPE-1K Swimming Pool Board Spare Key.

CARAVAN DISTRIBUTION BOARD - IP65



CDB-2

Hinged Weatherproof Lockable IP65 Board complete with: Earth leakage, 2x 3kA MCB's. 2x 16A 3 Pin Ip65 Sockets, & pre-moulded knockouts. Size: 220(L) x 282(W) x 120(D)mm

SWIMMING POOL BOARD - IP65



SPE-1LED

* **Only for where LED light is being used. Max Load - 8W LED**

Hinged Weatherproof Lockable IP65 Board complete with: Transformer, Programmeable Time Switch, 2 x 3kA MCB's, Isolator, & Pre-moulded knockouts. Size: 170(L) x 170(W) x 70(D)mm (GR15062)

PLASTIC SURFACE MOUNTING DISTRIBUTION BOARDS IP66



56CBI-4

100(L) x 195(W) x 100(D)

IP66; Padlockable; 1 x 4 Way

PLASTIC SURFACE MOUNTING DISTRIBUTION BOARDS IP66



56CBI-4N

100(L) x 195(W) x 100(D)

IP66; Padlockable with neon indication; 1 x 4 Way

PLASTIC SURFACE MOUNTING SWITCHED SOCKET



56CV315RP

16A 3 PIN SWITCHED SOCKET
PADLOCKABLE
IP66

POLYCARBONATE BULKHEAD IP44



PCB

100(L) x 195(W) x 100(D)

IP44; Polycarbonate Bulkhead



PLASTIC SURFACE MOUNTING DISTRIBUTION BOARDS - IP41

DB-2W-P-S	140(L) x 90(W) x 85(D)	2 Module	1 x 2 Way
DB-4W-P-S	210(L) x 112(W) x 85(D)	4 Module	1 x 4 Way
DB-6W-P-S	210(L) x 148(W) x 85(D)	6 Module	1 x 6 Way
DB-8W-P-S	210(L) x 184(W) x 85(D)	8 Module	1 x 8 Way
DB-10W-P-S	210(L) x 222(W) x 85(D)	10 Module	1 x 10 Way
DB-12W-P-S	210(L) x 256(W) x 85(D)	12 Module	1 x 12 Way
DB-15W-P-S	310(L) x 200(W) x 85(D)	15 Module	1 x 15 Way
DB-18W-P-S	222(L) x 364(W) x 85(D)	18 Module	1 x 18 Way
DB-24W-P-S	325(L) x 270(W) x 85(D)	24 Module	2 x 12 Way
DB-36W-P-S	473(L) x 305(W) x 95(D)	36 Module	3 x 12 Way
DB-45W-P-S	473(L) x 326(W) x 95(D)	45 Module	3 x 15 Way

All above complete with Earth/Neutral Bar



PLASTIC SURFACE MOUNTING DISTRIBUTION BOARDS - IP65

DB-3W-P-S65	210(L) x 140(W) x 100(D)	3 Module	1 x 3 Way
DB-4W-P-S65	210(L) x 140(W) x 100(D)	4 Module	1 x 4 Way
DB-5W-P-S65	210(L) x 140(W) x 100(D)	5 Module	1 x 5 Way
DB-8W-P-S65	210(L) x 215(W) x 100(D)	8 Module	1 x 8 Way
DB-12W-P-S65	260(L) x 300(W) x 140(D)	12 Module	1 x 12 Way
DB-18W-P-S65	285(L) x 410(W) x 140(D)	18 Module	1 x 18 Way
DB-24W-P-S65	300(L) x 415(W) x 140(D)	24 Module	2 x 12 Way

All above complete with Earth/Neutral Bar



PLASTIC WALL TRAY FLUSH MOUNTING DISTRIBUTION BOARDS - IP41

DB-6W-P-F	200(L) x 150(W) x 66(D)	6 Module	1 x 6 Way
DB-8W-P-F	200(L) x 184(W) x 66(D)	8 Module	1 x 8 Way
DB-10W-P-F	200(L) x 222(W) x 66(D)	10 Module	1 x 10 Way
DB-12W-P-F	200(L) x 256(W) x 66(D)	12 Module	1 x 12 Way
DB-15W-P-F	200(L) x 310(W) x 66(D)	15 Module	1 x 15 Way
DB-18W-P-F	220(L) x 365(W) x 76(D)	18 Module	1 x 18 Way
DB-24W-P-F	340(L) x 365(W) x 76(D)	24 Module	2 x 12 Way
DB-36W-P-F	440(L) x 255(W) x 76(D)	36 Module	3 x 12 Way
DB-45W-P-F	440(L) x 255(W) x 76(D)	45 Module	3 x 15 Way



PLASTIC COVER/STEEL WALL TRAY FLUSH MOUNTING DISTRIBUTION BOARDS - IP41

DB-12W-S-F	250(L) x 185(W) x 85(D)	12 Module	1 x 12 Way
DB-15W-S-F	305(L) x 185(W) x 85(D)	15 Module	1 x 15 Way
DB-18W-S-F	360(L) x 215(W) x 85(D)	18 Module	1 x 18 Way
DB-24W-S-F	340(L) x 300(W) x 85(D)	24 Module	2 x 12 Way
DB-36W-S-F	482(L) x 300(W) x 85(D)	36 Module	3 x 12 Way

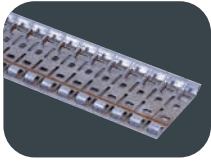
* STEEL WALL TRAY COMPLETE WITH STEEL MESH



SHROUDS - IP41

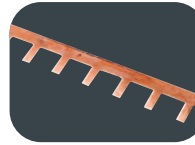
SM-1W	1 Way Plastic Shroud	1 Module	1 x 1 Way
SM-2W	2 Way Plastic Shroud	2 Module	1 x 2 Way
SM-4W	4 Way Plastic Shroud	4 Module	1 x 4 Way
SM-6W	6 Way Plastic Shroud	6 Module	1 x 6 Way
SM-8W	8 Way Plastic Shroud	8 Module	1 x 8 Way

MINI RAIL FOR SCHENKER PRODUCTS

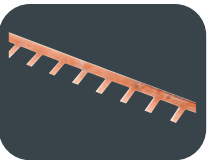


SMR
Galvanised Mini Rail - 1m length

SINGLE PHASE BUSBAR FOR SCHENKER PRODUCTS



SBB19
100A Sgl Phase Un-insulated Busbar for 19mm Schenker



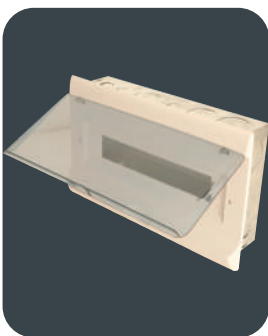
13mm BUSBAR

SBB-13-1 63A 1 Phase Busbar
SBB-13-3 63A 3 Phase Busbar



NEUTRAL BAR

SMR-NB 9 Termination Points :
2 x 25mm & 7 x 6mm



SCHENKER ADJUSTABLE FLUSH MOUNTING DISTRIBUTION BOARDS - with Earth/Neutral bars

SDB1-20W-A-F	310(L) x 190(W) x 70(H)	IP41	SMC1 (19mm CB's) = 10 Modules (10 Way)
			SM13 (13mm CB's) = 20 Modules (20 Way)
SDB1-24W-A-F	360(L) x 220(W) x 80(H)	IP41	SMC1 (19mm CB's) = 12 Modules (12 Way)
			SM13 (13mm CB's) = 24 Modules (24 Way)

SURFACE MOUNT DISTRIBUTION BOARDS

SCU4S	4 WAY	SURFACE DB COMPLETE WITH EARTH & NEUTRAL BAR
SCU6S	6 WAY	SURFACE DB COMPLETE WITH EARTH & NEUTRAL BAR
SCU8S	8 WAY	SURFACE DB COMPLETE WITH EARTH & NEUTRAL BAR
SCU10S	10 WAY	SURFACE DB COMPLETE WITH EARTH & NEUTRAL BAR
SCU12S	12 WAY	SURFACE DB COMPLETE WITH EARTH & NEUTRAL BAR
SCU16S	16 WAY	SURFACE DB COMPLETE WITH EARTH & NEUTRAL BAR
SCU18S	18 WAY	SURFACE DB COMPLETE WITH EARTH & NEUTRAL BAR
SCU20S	20 WAY	SURFACE DB COMPLETE WITH EARTH & NEUTRAL BAR

FLUSH MOUNT DISTRIBUTION BOARDS

SCU4F	4 WAY	FLUSH DB COMPLETE WITH EARTH & NEUTRAL BAR
SCU6F	6 WAY	FLUSH DB COMPLETE WITH EARTH & NEUTRAL BAR
SCU8F	8 WAY	FLUSH DB COMPLETE WITH EARTH & NEUTRAL BAR
SCU10F	10 WAY	FLUSH DB COMPLETE WITH EARTH & NEUTRAL BAR
SCU12F	12 WAY	FLUSH DB COMPLETE WITH EARTH & NEUTRAL BAR
SCU16F	16 WAY	FLUSH DB COMPLETE WITH EARTH & NEUTRAL BAR
SCU18F	18 WAY	FLUSH DB COMPLETE WITH EARTH & NEUTRAL BAR
SCU20F	20 WAY	FLUSH DB COMPLETE WITH EARTH & NEUTRAL BAR

- Superb Italian design and quality • Conforms to EN60670-24:2005
- Glow wire test: 650° EN 60335-1:94 + IEC695-2-1 • Min / Max Temperature: - 5°C and + 60°C
- Shock resistance: IK07 • Halogen Free product • DIN Rail

DISTRIBUTION BOARD - IP65- SMOKY DOOR



GR15060
112(W) x 154(L) x 75(D) IP65
4-5 Module 4/5 Way

Earth and Neutral Bars sold separately

DISTRIBUTION BOARD - IP65- SMOKY DOOR



GR15062
170(W) x 170(L) x 75(D) IP65
6-8 Module 6/8 Way

Earth and Neutral Bars sold separately

DISTRIBUTION BOARD - IP65- SMOKY DOOR



GR15064
240(W) x 202(L) x 75(D) IP65
12 Module 1 x 12 Way

Earth and Neutral Bars sold separately

DISTRIBUTION BOARD - IP65- SMOKY DOOR



GR15066
240(W) x 331(L) x 80(D) IP65
24 Module 2 x 12 Way

Earth and Neutral Bars sold separately

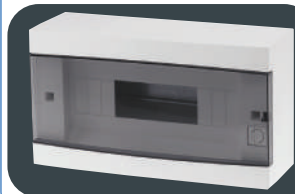
DISTRIBUTION BOARD - IP40 - SMOKY DOOR



GR20308
216(W) x 174(L) x 75(D) IP40
8 Module 1 x 8
Way
Optional: Lockable with GR16710 mechanism

Earth and Neutral Bars sold separately

DISTRIBUTION BOARD - IP40 - SMOKY DOOR



GR20312
310(W) x 174(L) x 75(D) IP40
12 Module 1 x 12
Way
Optional: Lockable with GR16710 mechanism

Earth and Neutral Bars sold separately

DISTRIBUTION BOARD - IP40 - SMOKY DOOR



GR20324
310(W) x 338(L) x 75(D) IP40
24 Module 2 x 12
Way
Optional: Lockable with GR16710 mechanism

Earth and Neutral Bars sold separately

DISTRIBUTION BOARD - IP40 - SMOKY DOOR



GR20336
310(W) x 492(L) x 75(D) IP40
36 Module 3 x 12
Way
Optional: Lockable with GR16710 mechanism

Earth and Neutral Bars sold separately

DISTRIBUTION BOARD - IP40 - WHITE DOOR



GR20608
216(W) x 174(L) x 75(D) IP40
8 Module 1 x 8
Way
Optional: Lockable with GR16710 mechanism

Earth and Neutral Bars sold separately

DISTRIBUTION BOARD - IP40 - WHITE DOOR



GR20612
310(W) x 174(L) x 75(D) IP40
12 Module 1 x 12
Way
Optional: Lockable with GR16710 mechanism

Earth and Neutral Bars sold separately

DISTRIBUTION BOARD - IP40 - WHITE DOOR



GR20624
310(W) x 338(L) x 75(D) IP40
24 Module 2 x 12
Way
Optional: Lockable with GR16710 mechanism

Earth and Neutral Bars sold separately

DISTRIBUTION BOARD - IP40 - WHITE DOOR



GR20636
310(W) x 492(L) x 75(D) IP40
36 Module 3 x 12
Way
Optional: Lockable with GR16710 mechanism

Earth and Neutral Bars sold separately

DISTRIBUTION BOARD - IP40 - SMOKY DOOR



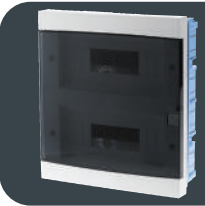
GR19308
216(W) x 174(L) x 75(D) IP40
8 Module 1 x 8
Way
Optional: Lockable with GR16710 mechanism
Earth and Neutral Bars sold separately

DISTRIBUTION BOARD - IP40 - SMOKY DOOR



GR19312
310(W) x 174(L) x 75(D) IP40
12 Module 1 x 12
Way
Optional: Lockable with GR16710 mechanism
Earth and Neutral Bars sold separately

DISTRIBUTION BOARD - IP40 - SMOKY DOOR



GR19324
310(W) x 338(L) x 75(D) IP40
24 Module 2 x 12
Way
Optional: Lockable with GR16710 mechanism
Earth and Neutral Bars sold separately

DISTRIBUTION BOARD - IP40 - SMOKY DOOR



GR19336
310(W) x 492(L) x 75(D) IP40
36 Module 3 x 12
Way
Optional: Lockable with GR16710 mechanism
Earth and Neutral Bars sold separately

DISTRIBUTION BOARD - IP40 - WHITE DOOR



GR19608
216(W) x 174(L) x 75(D) IP40
8 Module 1 x 8
Way
Optional: Lockable with GR16710 mechanism
Earth and Neutral Bars sold separately

DISTRIBUTION BOARD - IP40 - WHITE DOOR



GR19612
310(W) x 174(L) x 75(D) IP40
12 Module 1 x 12
Way
Optional: Lockable with GR16710 mechanism
Earth and Neutral Bars sold separately

DISTRIBUTION BOARD - IP40 - WHITE DOOR



GR19624
310(W) x 338(L) x 75(D) IP40
24 Module 2 x 12
Way
Optional: Lockable with GR16710 mechanism
Earth and Neutral Bars sold separately

DISTRIBUTION BOARD - IP40 - WHITE DOOR



GR19636
310(W) x 492(L) x 75(D) IP40
36 Module 3 x 12
Way
Optional: Lockable with GR16710 mechanism
Earth and Neutral Bars sold separately



ACCESSORIES

- GR16700** Presson opening accessory for GR19 & GR20 range only
- GR16710** Key lock accessory for GR20 range only
- GR11028** Joint for flush mounting boards
- GR16731** Spare gland plate for enclosure GR20 range white
- GR17402** Sachet 35 x 4 fixing brackets + screws
- GR17414** Techno - polymer screws
- GR11216** Solid lid for flush mounting box GR19308/19608 - 8 way
- GR11218** Solid lid for flush mounting box GR19312/19612 - 12 way
- GR11224** Solid lid for flush mounting box GR19324/19624 - 24 way
- GR11225** Solid lid for flush mounting box GR19336/19636 - 36 way

- Powder coated, UV resistant mild steel enclosures.
- 1,6mm Steel thickness. • Available in Orange or Grey.
- Complete with accessories. **Inner door kits to be ordered separately.** • KEMA Approved.



MCE-101

MCE-125

KCM1-100-ENC

Part Number	Dimensions	Colours
IP56 MILD STEEL SURFACE MOUNTING ENCLOSURES		
MCE-101	250 x 200 x 150	Orange / Grey
MCE-102	300 x 250 x 150	Orange / Grey
MCE-103	300 x 250 x 200	Orange / Grey
MCE-104	300 x 300 x 150	Orange / Grey
MCE-105	300 x 300 x 200	Orange / Grey
MCE-107	400 x 300 x 200	Orange / Grey
MCE-108	400 x 400 x 200	Orange / Grey
MCE-111	500 x 400 x 250	Orange / Grey
MCE-114	600 x 400 x 250	Orange / Grey
MCE-117	600 x 500 x 250	Orange / Grey
MCE-119	700 x 500 x 250	Orange / Grey
MCE-122	800 x 600 x 250	Orange / Grey
MCE-123	800 x 600 x 350	Orange / Grey
MCE-124	1000 x 600 x 250	Orange / Grey
MCE-125	1000 x 600 x 300	Orange / Grey
MCE-126	1000 x 800 x 250	Orange / Grey
MCE-127	1000 x 800 x 300	Orange / Grey
MCE-128	1000 x 800 x 350	Orange / Grey
MCE-129	1200 x 800 x 350	Orange / Grey

Complete with chassis plate and wall brackets

MCCB IP65 MILD STEEL SURFACE MOUNTING ENCLOSURE (FOR ONESTO KCM1 MCCB'S)		
KCM1-100-ENC	300 x 250 x 150	Orange
KCM1-200-ENC	400 x 250 x 150	Orange
KCM1-400-ENC	600 x 400 x 200	Orange
KCM1-630-ENC	700 x 500 x 200	Orange

Complete with chassis plate and wall brackets

SPARE CHASSIS PLATE - GALVANISED STEEL		
MCE-103-CP	Spare Chassis plate	Fits MCE-102 & 103
MCE-105-CP	Spare Chassis plate	Fits MCE-104 & 105
MCE-107-CP	Spare Chassis plate	Fits MCE-107
MCE-108-CP	Spare Chassis plate	Fits MCE-108
MCE-111-CP	Spare Chassis plate	Fits MCE-111
MCE-114-CP	Spare Chassis plate	Fits MCE-114
MCE-117-CP	Spare Chassis plate	Fits MCE-117
MCE-119-CP	Spare Chassis plate	Fits MCE-119
MCE-122-CP	Spare Chassis plate	Fits MCE-122 & 123
MCE-124-CP	Spare Chassis plate	Fits MCE-124 & 125
MCE-126-CP	Spare Chassis plate	Fits MCE-126, 127 & 128
MCE-129-CP	Spare Chassis plate	Fits MCE-129

SPARE OUTER DOOR - ORANGE		
MCE-103-O-D	Spare Outer Door	Fits MCE-102 & 103
MCE-105-O-D	Spare Outer Door	Fits MCE-104 & 105
MCE-107-O-D	Spare Outer Door	Fits MCE-107
MCE-108-O-D	Spare Outer Door	Fits MCE-108
MCE-111-O-D	Spare Outer Door	Fits MCE-111
MCE-114-O-D	Spare Outer Door	Fits MCE-114
MCE-117-O-D	Spare Outer Door	Fits MCE-117
MCE-119-O-D	Spare Outer Door	Fits MCE-119
MCE-122-O-D	Spare Outer Door	Fits MCE-122 & 123
MCE-124-O-D	Spare Outer Door	Fits MCE-124 & 125
MCE-126-O-D	Spare Outer Door	Fits MCE-126, 127 & 128
MCE-129-O-D	Spare Outer Door	Fits MCE-129

KEYS & LOCKS	
MCE-PK	Spare Panel Key for enclosure
MCE-PL	Spare Panel Lock for enclosure



- Powder coated, UV resistant mild steel kits.
- 1,6mm Steel thickness • Available in orange.
- Inner doors and kits only - Enclosures to be ordered separately • KEMA Approved.

IP65 SLOTTED INNER DOORS COMPLETE WITH MOUNTING PLATES & FITTINGS FOR DIN RAIL MCB'S

MCE-103-ID	300 x 250 8 way Inner Door	Orange
MCE-105-ID	300 x 300 8 Way Inner Door	Orange
MCE-107-ID	400 x 300 20 Way (2 x 10) Inner Door	Orange
MCE-108-ID	400 x 400 20 Way (2 x 10) Inner Door	Orange
MCE-111-ID	500 x 400 48 Way (3 x 16) Inner Door	Orange
MCE-114-ID	600 x 400 48 Way (3 x 16) Inner Door	Orange
MCE-117-ID	600 x 500 48 Way (3 x 16) Inner Door	Orange
MCE-119-ID	700 x 500 84 Way (4 x 21) Inner Door	Orange
MCE-122-ID	800 x 600 130 Way (5 x 26) Inner Door	Orange
MCE-124-ID	1000 x 600 156 Way (6 x 26) Inner Door	Orange
MCE-126-ID	1000 x 800 228 Way (6 x 38) Inner Door	Orange
MCE-129-ID	1200 x 800 304 Way (8 x 38) Inner Door	Orange

Earth and Neutral Bar not supplied



IP65 SOLID INNER DOORS COMPLETE WITH MOUNTING PLATES & FITTINGS

MCE-103-SID	300 x 250 Solid Inner Door	Orange
MCE-105-SID	300 x 300 Solid Inner Door	Orange
MCE-107-SID	400 x 300 Solid Inner Door	Orange
MCE-108-SID	400 x 400 Solid Inner Door	Orange
MCE-111-SID	500 x 400 Solid Inner Door	Orange
MCE-114-SID	600 x 400 Solid Inner Door	Orange
MCE-117-SID	600 x 500 Solid Inner Door	Orange
MCE-119-SID	700 x 500 Solid Inner Door	Orange
MCE-122-SID	800 x 600 Solid Inner Door	Orange
MCE-124-SID	1000 x 600 Solid Inner Door	Orange
MCE-126-SID	1000 x 800 Solid Inner Door	Orange
MCE-129-SID	1200 x 800 Solid Inner Door	Orange



IP55 MILD STEEL ENCLOSURES - SURFACE DISTRIBUTION BOARDS - WHITE

09201	326(H) x 465(W) x 115(D)	1 Row 16 Way
09202	476(H) x 465(W) x 115(D)	2 Row 32 Way
09203	626(H) x 465(W) x 115(D)	3 Row 48 Way
09204	776(H) x 465(W) x 115(D)	4 Row 64 Way
09205	926(H) x 465(W) x 115(D)	5 Row 80 Way
09206	1076(H) x 465(W) x 115(D)	6 Row 96 Way

Earth & Neutral bars on each row



IP55 MILD STEEL ENCLOSURES - FLUSH DISTRIBUTION BOARDS - WHITE

09191	326(H) x 465(W) x 115(D)	1 Row 16 Way
09192	476(H) x 465(W) x 115(D)	2 Row 32 Way
09193	626(H) x 465(W) x 115(D)	3 Row 48 Way
09194	776(H) x 465(W) x 115(D)	4 Row 64 Way
09195	926(H) x 465(W) x 115(D)	5 Row 80 Way
09196	1076(H) x 465(W) x 115(D)	6 Row 96 Way

Earth & Neutral bars on each row

IP55 MILD STEEL ENCLOSURES - DOUBLE DOOR SURFACE DISTRIBUTION BOARDS - WHITE OR ORANGE

092-200	1015(H) x 670(W) x 205(D)mm	4 x 12 Way DB
092-400	1015(H) x 880(W) x 205(D)mm	4 x 18 Way DB
092-630	1020(H) x 1100(W) x 205(D)mm	4 x 24 Way DB

Earth & Neutral bars on each row. Busbar not supplied.