

AC MINI MAGNETIC CONTACTORS - 1 NO OR 1 NC AUXILIARY - 3 POLE



Part Number	Current Rating		400V		Auxiliary Contact	Dimensions H x W x D
	AC3	AC1	kW	HP		
UKC1-6M-1A	6A	12A	2,2	3	1 NO	55 x 44 x 44mm
UKC1-6M-1B	6A	12A	2,2	3	1 NC	55 x 44 x 44mm
UKC1-9M-1A	9A	16A	4	5,5	1 NO	55 x 45 x 50mm
UKC1-9M-1B	9A	16A	4	5,5	1 NC	55 x 45 x 50mm
UKC1-12M-1A	12A	20A	5,5	7,5	1 NO	55 x 45 x 50mm
UKC1-12M-1B	12A	20A	5,5	7,5	1 NC	55 x 45 x 50mm
UKC1-16M-1A	16A	20A	7,5	10	1 NO	55 x 45 x 50mm
UKC1-16M-1B	16A	20A	7,5	10	1 NC	55 x 45 x 50mm

Available Coil Voltages AC ONLY. *Please Specify:

A=12V, B=24V, E=48V, F=110V, M=230V, Q=415V or T=525V. (AC ONLY)

AC MAGNETIC CONTACTORS - 1 NO OR 1 NC AUXILIARY - 3 POLE

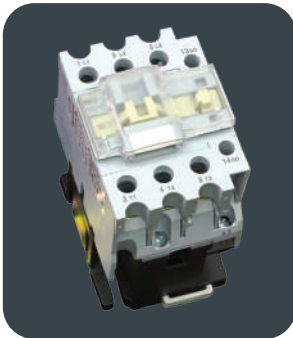


Part Number	Current Rating		400V		Auxiliary Contact	Dimensions H x W x D
	AC3	AC1	kW	HP		
MCE-D0910	9A	20A	4	5,5	1 NO	74 x 45 x 80mm
MCE-D0901	9A	20A	4	5,5	1 NC	74 x 45 x 80mm
MCE-D1210	12A	25A	5,5	7,5	1 NO	74 x 45 x 80mm
MCE-D1201	12A	25A	5,5	7,5	1 NC	74 x 45 x 80mm
MCE-D1810	18A	32A	7,5	10	1 NO	74 x 45 x 80mm
MCE-D1801	18A	32A	7,5	10	1 NC	74 x 45 x 80mm

Available Coil Voltages AC ONLY. *Please Specify:

A=12V, B=24V, E=48V, F=110V, M=230V, Q=415V or T=525V. (AC ONLY)

AC MAGNETIC CONTACTORS - 1 NO OR 1 NC AUXILIARY - 3 POLE

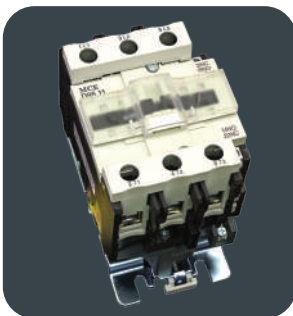


Part Number	Current Rating		400V		Auxiliary Contact	Dimensions H x W x D
	AC3	AC1	kW	HP		
MCE-D2510	25A	40A	11	15	1 NO	85 x 56 x 93mm
MCE-D2501	25A	40A	11	15	1 NC	85 x 56 x 93mm
MCE-D3210	32A	50A	15	20	1 NO	85 x 56 x 93mm
MCE-D3201	32A	50A	15	20	1 NC	85 x 56 x 93mm
MCE-D3810	38A	50A	15	20	1 NO	85 x 56 x 93mm
MCE-D3801	38A	50A	15	20	1 NC	85 x 56 x 93mm

Available Coil Voltages AC ONLY. *Please Specify:

A=12V, B=24V, E=48V, F=110V, M=230V, Q=415V or T=525V. (AC ONLY)

AC MAGNETIC CONTACTORS - 1 NO AND 1 NC AUXILIARY - 3 POLE



Part Number	Current Rating		400V		Auxiliary Contact	Dimensions H x W x D
	AC3	AC1	kW	HP		
MCE-D4011	40A	60A	18,5	25	1+1	125 x 75 x 114mm
MCE-D5011	50A	80A	22	30	1+1	125 x 75 x 114mm
MCE-D6511	65A	80A	30	40	1+1	125 x 75 x 114mm
MCE-D8011	80A	125A	37	50	1+1	125 x 75 x 123mm
MCE-D9511	95A	125A	45	60	1+1	125 x 75 x 123mm

Available Coil Voltages AC ONLY. *Please Specify:

A=12V, B=24V, E=48V, F=110V, M=230V, Q=415V or T=525V. (AC ONLY)

AC MAGNETIC CONTACTORS - 3 POLE



Part Number	Current Rating		400V		Dimensions H x W x D
	AC3	AC1	kW	HP	
MCE-F115	115A	200A	55	75	162 x 164 x 165mm
MCE-F150	150A	250A	75	100	162 x 164 x 165mm
MCE-F185	185A	275A	90	125	174 x 169 x 176mm
MCE-F225	225A	300A	110	150	174 x 169 x 176mm
MCE-F265	265A	350A	132	180	203 x 202 x 207mm
MCE-F330	330A	400A	160	220	206 x 206 x 213mm
MCE-F400	400A	500A	220	300	206 x 206 x 213mm
MCE-F500	500A	700A	275	400	238 x 233 x 226mm
MCE-F630	630A	1000A	375	500	300 x 310 x 250mm
MCE-F800	800A	1250A	450	610	300 x 310 x 255mm

Available Coil Voltages AC ONLY. *Please Specify:

A=12V, B=24V, E=48V, F=110V, M=230V, Q=415V or T=525V. (AC ONLY)

AC MAGNETIC CONTACTORS - 4 POLE



AC MAGNETIC CONTACTORS - 4 POLE

Part Number	Current Rating		400V		Main Contact	Dimensions H x W x D
	AC3	AC1	kW	HP		
MCE-D12004	12A	25A	5,5	7,5	4 NO	74 x 45 x 80mm
MCE-D12008	12A	25A	5,5	7,5	2 NO + 2 NC	74 x 45 x 80mm

Available Coil Voltages AC ONLY. *Please Specify:

A=12V, B=24V, E=48V, F=110V, M=230V, Q=415V or T=525V. (AC ONLY)



AC MAGNETIC CONTACTORS - 4 POLE

Part Number	Current Rating		400V		Main Contact	Dimensions H x W x D
	AC3	AC1	kW	HP		
MCE-D25004	25A	40A	11	15	4 NO	85 x 56 x 93mm
MCE-D25008	25A	40A	11	15	2 NO + 2 NC	85 x 56 x 93mm

Available Coil Voltages. *Please Specify:

A=12V, B=24V, E=48V, F=110V, M=230V, Q=415V or T=525V. (AC ONLY)

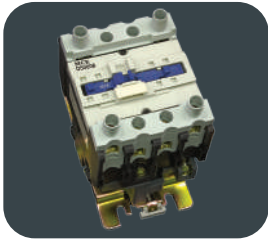


AC MAGNETIC CONTACTORS - 4 POLE

Part Number	Current Rating		400V		Main Contact	Dimensions H x W x D
	AC3	AC1	kW	HP		
MCE-D40004	40A	60A	18,5	25	4 NO	125 x 80 x 114mm
MCE-D40008	40A	60A	18,5	25	2 NO + 2 NC	125 x 80 x 125mm

Available Coil Voltages AC ONLY. *Please Specify:

A=12V, B=24V, E=48V, F=110V, M=230V, Q=415V or T=525V. (AC ONLY)

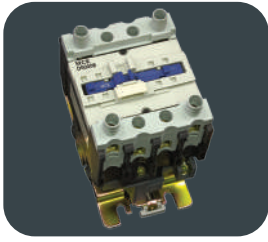


AC MAGNETIC CONTACTORS - 4 POLE

Part Number	Current Rating		400V		Main Contact	Dimensions H x W x D
	AC3	AC1	kW	HP		
MCE-D50004	50A	80A	22	30	4 NO	125 x 85 x 114mm
MCE-D50008	50A	80A	22	30	2 NO + 2 NC	125 x 85 x 125mm

Available Coil Voltages AC ONLY. *Please Specify:

A=12V, B=24V, E=48V, F=110V, M=230V, Q=415V or T=525V. (AC ONLY)

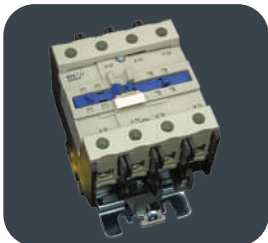


AC MAGNETIC CONTACTORS - 4 POLE

Part Number	Current Rating		400V		Main Contact	Dimensions H x W x D
	AC3	AC1	kW	HP		
MCE-D65004	65A	80A	30	40	4 NO	125 x 85 x 114mm
MCE-D65008	65A	80A	30	40	2 NO + 2 NC	125 x 85 x 128mm

Available Coil Voltages AC ONLY. *Please Specify:

A=12V, B=24V, E=48V, F=110V, M=230V, Q=415V or T=525V. (AC ONLY)

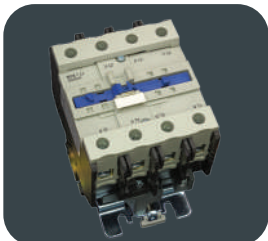


AC MAGNETIC CONTACTORS - 4 POLE

Part Number	Current Rating		400V		Main Contact	Dimensions H x W x D
	AC3	AC1	kW	HP		
MCE-D80004	80A	125A	37	50	4 NO	125 x 95 x 120mm
MCE-D80008	80A	125A	37	50	2 NO + 2 NC	125 x 95 x 135mm

Available Coil Voltages AC ONLY. *Please Specify:

A=12V, B=24V, E=48V, F=110V, M=230V, Q=415V or T=525V. (AC ONLY)



AC MAGNETIC CONTACTORS - 4 POLE

Part Number	Current Rating		400V		Main Contact	Dimensions H x W x D
	AC3	AC1	kW	HP		
MCE-D95004	95A	125A	45	60	4 NO	125 x 95 x 120mm
MCE-D95008	95A	125A	45	60	2 NO + 2 NC	125 x 95 x 135mm

Available Coil Voltages AC ONLY. *Please Specify:

A=12V, B=24V, E=48V, F=110V, M=230V, Q=415V or T=525V. (AC ONLY)



AC MAGNETIC CONTACTORS - 4 POLE

Part Number	Current Rating		400V		Main Contact	Dimensions H x W x D
	AC3	AC1	kW	HP		
MCE-F115-4	115A	200A	55	75	4 NO	162 x 200 x 170mm
MCE-F150-4	150A	250A	75	100	4 NO	170 x 200 x 170mm
MCE-F185-4	185A	275A	90	125	4 NO	175 x 210 x 185mm
MCE-F225-4	225A	300A	110	150	4 NO	200 x 210 x 185mm
MCE-F265-4	265A	350A	132	180	4 NO	205 x 245 x 215mm
MCE-F330-4	330A	400A	160	220	4 NO	210 x 260 x 220mm
MCE-F400-4	400A	500A	220	300	4 NO	210 x 260 x 220mm
MCE-F500-4	500A	700A	275	400	4 NO	240 x 280 x 230mm
MCE-F630-4	630A	1000A	375	500	4 NO	300 x 380 x 250mm

Available Coil Voltages AC ONLY. *Please Specify:

A=12V, B=24V, E=48V, F=110V, M=230V, Q=415V or T=525V. (AC ONLY)



CONTROL RELAY

Part Number	Current Rating		400V		Main Contact
	AC3	AC1	kW	HP	
JZC4-22	10A	CONTROL RELAY			2 NO & 2 NC
JZC4-31	10A	CONTROL RELAY			3 NO & 1 NC
JZC4-40	10A	CONTROL RELAY			4 NO

Available Coil Voltages AC ONLY. *Please Specify:

A=12V, B=24V, E=48V, F=110V, M=230V, Q=415V or T=525V. (AC ONLY)

COILS

UKX-*

AC Magnetic Coil
to fit Mini Contactors
UKC1-6/9/12/16



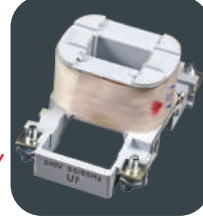
Available Coil Voltages. *Please Specify:

A=12V, B=24V, E=48V, F=110V, M=230V, Q=415V or T=525V. (AC ONLY)

COILS

MCX-D2-*

AC Magnetic Coil
to fit Contactors
MCE-D09 / MCE-D12
MCE-D18 / JZC RELAY



Available Coil Voltages. *Please Specify:

A=12V, B=24V, E=48V, F=110V, M=230V, Q=415V or T=525V. (AC ONLY)

COILS

MCX-D4-*

AC Magnetic Coil
to fit Contactors
MCE-D25 / MCE-D32
MCE-D38



Available Coil Voltages. *Please Specify:

A=12V, B=24V, E=48V, F=110V, M=230V, Q=415V or T=525V. (AC ONLY)

COILS

MCX-D6-*

AC Magnetic Coil TO FIT MCE-D40 / MCE-D95



Available Coil Voltages. *Please Specify: **A=12V, B=24V, E=48V,**

F=110V, M=230V, Q=415V or T=525V. (AC ONLY)

COIL BASE

MCX-D6-BASE

Base for Coil
MCE-D40 / MCE-D95



LARGE FRAME CONTACTOR COILS

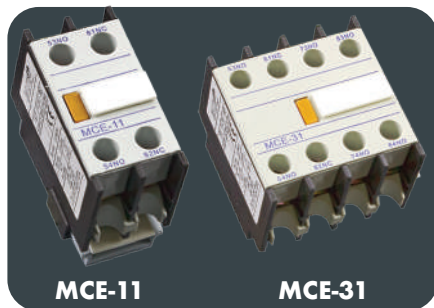


MCX-FF-*	AC Magnetic Coil	MCE-F115 / MCE-F150
MCX-FG-*	AC Magnetic Coil	MCE-F185 / MCE-F225
MCX-FH-*	AC Magnetic Coil	MCE-F265
MCX-FH-***2	AC Magnetic Coil	MCE-F330
MCX-FJ-*	AC Magnetic Coil	MCE-F400
MCX-FK-*	AC Magnetic Coil	MCE-F500
MCX-FL-*	AC Magnetic Coil	MCE-F630
MCX-FL-8	AC Magnetic Coil	MCE-F800

Available Coil Voltages AC ONLY. *Please Specify:

A=12V, B=24V, E=48V, F=110V, M=230V, Q=415V or T=525V. (AC ONLY)

TOP MOUNT AUXILIARY CONTACT BLOCKS



MCE-02	Top Mount Clip-on Auxiliary Block	0 NO & 2 NC
MCE-11	Top Mount Clip-on Auxiliary Block	1 NO & 1 NC
MCE-20	Top Mount Clip-on Auxiliary Block	2 NO & 0 NC
MCE-22	Top Mount Clip-on Auxiliary Block	2 NO & 2 NC
MCE-40	Top Mount Clip-on Auxiliary Block	4 NO & 0 NC
MCE-04	Top Mount Clip-on Auxiliary Block	0 NO & 4 NC
MCE-13	Top Mount Clip-on Auxiliary Block	1 NO & 3 NC
MCE-31	Top Mount Clip-on Auxiliary Block	3 NO & 1 NC

Suitable for contactors: MCE-D09 up to F630



AUXILIARY CONTACT BLOCKS

AU-2M	Top Mount Clip-on Auxiliary Block	1NO & 1NC
AU-4M	Top Mount Clip-on Auxiliary Block	2NO & 2NC

Suitable for: UKC1-6M up to UKC1-16M



SIDE MOUNT AUXILIARY CONTACT BLOCKS

MCE-DN11	Side Mount Clip-on Auxiliary Block	1 NO & 1 NC
MCE-DN20	Side Mount Clip-on Auxiliary Block	2 NO & 0 NC

Suitable for contactors: MCE-D09 - D65



CLIP ON PNEUMATIC TIMERS

MCEA-DT2	Clip-on Pneumatic Timer- Delay On	0 - 30 seconds	1 NO & 1 NC
MCEA-DT4	Clip-on Pneumatic Timer- Delay On	10 - 180 seconds	1 NO & 1 NC
MCEA-DT6	Clip-on Pneumatic Timer- Delay Off	0 - 30 seconds	1 NO & 1 NC

Suitable for contactors: MCE-D09 up to F630



MECHANICAL INTERLOCKS FOR SMALL & MEDIUM FRAME CONTACTORS

CA9-D01	Mechanical Interlocks	MCE-D09 / D38
CA9-D02	Mechanical Interlocks	MCE-D40 / D65
CA9-D03	Mechanical Interlocks	MCE-D80 / D95



MECHANICAL INTERLOCKS FOR LARGE FRAME CONTACTORS

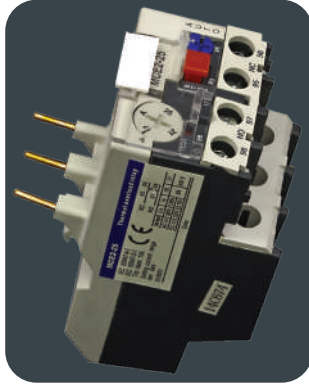
MCE-FF	Mechanical Interlocks	MCE-F115 / 150
MCE-FG	Mechanical Interlocks	MCE-F185 / 225
MCE-FH	Mechanical Interlocks	MCE-F256 / 330
MCE-FJ	Mechanical Interlocks	MCE-F400
MCE-FK	Mechanical Interlocks	MCE-F500
MCE-FL	Mechanical Interlocks	MCE-F630



LARGE FRAME CONTACT KITS

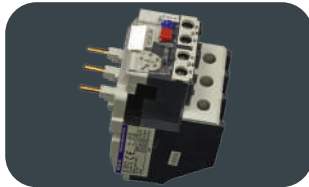
MA5-F115	Spare Fixed & Moving Contact Tips
MA5-F150	Spare Fixed & Moving Contact Tips
MA5-F185	Spare Fixed & Moving Contact Tips
MA5-F225	Spare Fixed & Moving Contact Tips
MA5-F265	Spare Fixed & Moving Contact Tips
MA5-F330	Spare Fixed & Moving Contact Tips
MA5-F400	Spare Fixed & Moving Contact Tips
MA5-F500	Spare Fixed & Moving Contact Tips
MA5-F630	Spare Fixed & Moving Contact Tips

SMALL FRAME - SUITABLE FOR MCE-D09 - D32 CONTACTORS



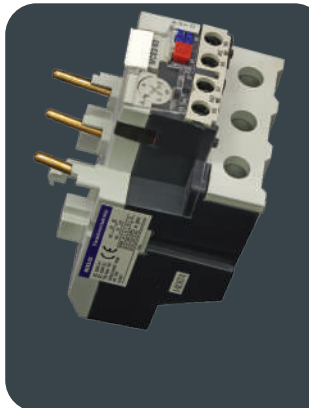
Part Number	Current Rating Amps	400V		Dimensions (mm) H x W x D
		kW	HP	
MCE2-D130.25	0.16 - 0.25	0.06	-	90 x 44 x 60
MCE2-D130.4	0,25 - 0.40	0.09	1/8	90 x 44 x 60
MCE2-D130.63	0.40 - 0.63	0.20	1/4	90 x 44 x 60
MCE2-D131.0	0.63 - 1.0	0.37	1/2	90 x 44 x 60
MCE2-D131.6	1.0 - 1.6	0,55	3/4	90 x 44 x 60
MCE2-D132.0	1.25 - 2.0	0.57	3/4	90 x 44 x 60
MCE2-D132.5	1.6 - 2.5	0.75	1	90 x 44 x 60
MCE2-D134.0	2.5 - 4.0	1.5	2	90 x 44 x 60
MCE2-D136.0	4.0 - 6.0	2.2	3	90 x 44 x 60
MCE2-D138.0	5.5 - 8	3.0	4	90 x 44 x 60
MCE2-D1310.0	7 - 10	4.0	5	90 x 44 x 60
MCE2-D1313.0	9 - 13	5.5	7.5	90 x 44 x 60
MCE2-D1318.0	12 - 18	7.5	10	90 x 44 x 60
MCE2-D1325.0	17 - 25	11	15	90 x 44 x 60
MCE2-D1332.0	23.0 - 32.0	15	20	90 x 44 x 60

MEDIUM FRAME - SUITABLE FOR MCE-D25 - D38 CONTACTORS



Part Number	Current Rating Amps	400V		Dimensions (mm) H x W x D
		kW	HP	
MCE2-D2332.0	23 - 32	15	20	90 x 54 x 70
MCE2-D2340.0	30 - 40	18,5	25	90 x 54 x 70

LARGE FRAME - SUITABLE FOR MCE-D40 - D95 CONTACTORS



Part Number	Current Rating Amps	400V		Dimensions (mm) H x W x D
		kW	HP	
MCE2-D3332.0	23 - 32	15	20	112 x 74 x 80
MCE2-D3336.0	28 - 36	18,5	25	112 x 74 x 80
MCE2-D3340.0	30 - 40	18,5	25	112 x 74 x 80
MCE2-D3350.0	37 - 50	22	30	112 x 74 x 80
MCE2-D3365.0	48 - 65	30	40	112 x 74 x 80
MCE2-D3370.0	55 - 70	30	40	112 x 74 x 80
MCE2-D3380.0	63 - 80	37	50	112 x 74 x 80
MCE2-D3393.0	80 - 93	45	60	112 x 74 x 80
MCE2-D43 120	95 - 120	55	75	112 x 95 x 135
MCE2-D43 140	110 - 140	70	100	112 x 95 x 135

LARGE FRAME - SUITABLE FOR MCE-F RANGE CONTACTORS



Part Number	Current Rating Amps	400V		Dimensions (mm) H x W x D
		kW	HP	
MR9-F200-150	90 - 150	75	100	112 x 95 x 135
MR9-F200-220	132 - 220	110	150	112 x 95 x 135
MR9-F630-330	200 - 330	160	220	155 x 140 x 135
MR9-F630-500	300 - 500	250		155 x 140 x 135
MR9-F630-630	380 - 630	315		155 x 140 x 135

OVERLOAD ACCESSORIES



CA7-D13	Free Standing Base for Overloads MCE2 - 25 (Small Frame)
CA7-D23	Free Standing Base for Overloads MCE2 - 36 (Medium Frame)
CA7-D33	Free Standing Base for Overloads MCE2 - 93 (Large Frame)

MANUAL MOTOR STARTERS



Part Number	kW @ 400V	Current Rating
DZS12-M05	0,37kW	0,63 - 1,0A
DZS12-M06	0,55kW	1,0 - 1,6A
DZS12-M07	0,75kW	1,6 - 2,5A
DZS12-M08	1,5kW	2,5 - 4,0A
DZS12-M10	2,2kW	4,0 - 6,3A
DZS12-M14	4,0kW	6 - 10A
DZS12-M16	5,5kW	9 - 14A
DZS12-M20	7,5kW	13 - 18A
DZS12-M21	10kW	17 - 23A
DZS12-M22	11kW	20 - 25A
DZS12-M32	15kW	24 - 32A
DZS12-M40	18,5kW	25 - 40A
DZS12-M63	30kW	40 - 63A
DZS12-M80	37kW	56 - 80A

MANUAL MOTOR STARTERS - ACCESSORIES (FOR M05 TO M32 ONLY)



DZS12-MC
IP55 Transparent
Enclosure Cover
Suitable for Manual
Motor Starters
DZS12-M05 up to
DZS12-M32



DZS-AE11
1N/O + 1N/C
Auxiliary (top mount)



DZS-AN11
1N/O + 1N/C Auxiliary
(side mount)
DZS-AN20
2N/O Auxiliary (side
mount)



DZS-AU115 110V Under Voltage Trip
DZS-AS115 110V Shunt Trip
DZS-AU225 225V Under Voltage Trip
DZS-AS225 225V Shunt Trip
DZS-AU385 380V Under Voltage Trip
DZS-AS385 380V Shunt Trip

MANUAL MOTOR STARTERS - ACCESSORIES (FOR M40 TO M80 ONLY)



DZS12-A01 1N/O + 1N/C Auxiliary (side mount)
DZS12-A02 1N/O + 1N/O Auxiliary (side mount)
DZS12-A03 1N/C + 1N/O + 1N/O Auxiliary (side mount)
DZS12-A05 1N/O + 1N/O + 1N/O Auxiliary (side mount)



DOL STARTER IP54 ENCLOSURE ONLY

MCE1-D12-EH	DOL Empty Housing - With push buttons
MCE1-D18-EH	DOL Empty Housing - With push buttons
MCE1-D25-EH	DOL Empty Housing - With push buttons



DOL STARTER - **NO OVERLOAD** - IP54 ENCLOSURE

MCE1-D123	5,5KW	7,5HP	No O/Load
MCE1-D185	7,5KW	10HP	No O/Load
MCE1-D255	11KW	15HP	No O/Load
MCE1-D325	15KW	20HP	No O/Load
MCE1-D405	18,5KW	25HP	No O/Load
MCE1-D505	22KW	30HP	No O/Load
MCE1-D655	30KW	40HP	No O/Load



DOL STARTER - **WITH OVERLOAD** - IP54 ENCLOSURE

MCE1-D123 1.0	0,37KW	1/2HP	0,63 - 1A
MCE1-D123 1.6	0,55KW	3/4HP	1,0 - 1,6A
MCE1-D123 2.0	0,75KW	1HP	1,25 - 2,0A
MCE1-D123 2.5	1,1KW	1,5HP	1,6 - 2,5A
MCE1-D123 4,0	1,5KW	2HP	2,5 - 4,0A
MCE1-D123 6.0	2,2KW	3HP	4,0 - 6,0A
MCE1-D123 8.0	3,0KW	4HP	5,5 - 8,0A
MCE1-D123 10	4KW	5HP	7 - 10A
MCE1-D123 13	5,5KW	7,5HP	9 - 13A
MCE1-D188 18	7,5KW	10HP	12 - 18A
MCE1-D255 25	11KW	15HP	17 - 25A
MCE1-D325 32	15KW	20HP	23 - 32A



DOL STARTER - **WITH OVERLOAD** - IP41 ENCLOSURE

MCE1-D401 40	18,5KW	25HP	30 - 40A
MCE1-D501 50	22KW	30HP	37 - 50A
MCE1-D651 65	30KW	40HP	48 - 65A

DOL STARTER - IP65 ENCLOSURE

MCE1-12TICE 1.0	0,37KW	1/2HP	0,63 - 1,0A
MCE1-12TICE 1.6	0,55KW	3/4HP	1,0 - 1,6A
MCE1-12TICE 2.0	0,75KW	1HP	1,25 - 2,0A
MCE1-12TICE 2.5	1,1KW	1,5HP	1,6 - 2,5A
MCE1-12TICE 4.0	1,5KW	2HP	2,5 - 4,0A
MCE1-12TICE 6.0	2,2KW	3HP	4,0 - 6,0A
MCE1-12TICE 8.0	3,0KW	4HP	5,5 - 8,0A
MCE1-12TICE 10	4,0KW	5HP	7 - 10A
MCE1-12TICE 13	5,5KW	7,5HP	9 - 13A
MCE1-18TICE 18	7,5KW	10HP	12 - 18A

DOL STARTER - **WITH OVERLOAD & ISOLATOR** - IP65 STEEL ENCLOSURE

MCE1-25TICE 25	11KW	15HP	17 - 25A
MCE1-32TICE 32	15KW	20HP	23 - 32A

DOL STARTER - **WITH OVERLOAD & ISOLATOR** - IP55 STEEL ENCLOSURE

MCE1-40TICE 40	18,5KW	25HP	30 - 40A
MCE1-50TICE 50	22KW	30HP	37 - 50A
MCE1-65TICE 65	30KW	40HP	48 - 65A
MCE1-80TICE 80	37KW	50HP	63 - 80A

- Pre-wired available in 400VAC - Other Voltages made up to order
- Enclosed types in IP55 Orange Mild Steel Enclosures (except Open type)
- Complete with Contactors, Thermal overload relay, Mechanical interlock, Timer & control devices (except Open type - No control devices, only wired to terminals.)

DESCRIPTION OF STAR DELTA STARTER TYPES

TYPE 1 (1K) STAR DELTA:
Open type on Din rail with Mains and Control wiring.

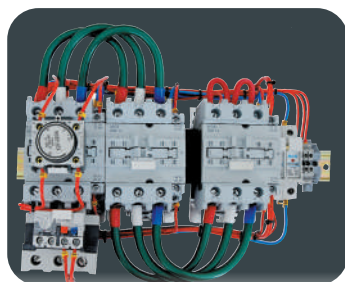
TYPE 2 (2K) STAR DELTA:
Enclosed with Pushbuttons and Isolator.

TYPE 3 (3K) STAR DELTA:
Enclosed with Pushbuttons.

TYPE 4 (4K) STAR DELTA:
Enclosed with Pushbuttons and Ammeter.

TYPE 5 (5K) STAR DELTA:
Enclosed with Pushbuttons, Isolator and Ammeter.

STAR DELTA STARTER - TYPE 1 - (OPEN TYPE)



Type 1

Part Number	400V kW	Overload Reference	Description
MCE-1K 5,5	5,5kW	MCE2-25 8,0	Open Star Delta
MCE-1K 7,5	7,5kW	MCE2-25 10,0	Open Star Delta
MCE-1K 11,0	11kW	MCE2-25 18	Open Star Delta
MCE-1K 15,0	15kW	MCE2-25 18	Open Star Delta
MCE-1K 18,5	18,5kW	MCE2-25 25	Open Star Delta
MCE-1K 22,0	22kW	MCE2-36 32	Open Star Delta
MCE-1K 30,0	30kW	MCE2-36 40	Open Star Delta
MCE-1K 37,0	37kW	MCE2-93 50	Open Star Delta
MCE-1K 45,0	45kW	MCE2-93 65	Open Star Delta
MCE-1K 55,0	55kW	MCE2-93 70	Open Star Delta
MCE-1K 75,0	75kW	MCE2-93 70	Open Star Delta
MCE-1K 90,0	90kW	MCE2-93 93	Open Star Delta
MCE-1K 110,0	110kW	O/Load + CT	Open Star Delta

STAR DELTA STARTER - TYPE 2 - (ENCLOSED WITH ISOLATOR)



Type 2

Part Number	400V kW	Overload Reference	Description
MCE-2K 5,5	5,5kW	MCE2-25 8,0	Enclosed Star Delta + Isolator
MCE-2K 7,5	7,5kW	MCE2-25 10	Enclosed Star Delta + Isolator
MCE-2K 11,0	11kW	MCE2-25 18	Enclosed Star Delta + Isolator
MCE-2K 15,0	15kW	MCE2-25 18	Enclosed Star Delta + Isolator
MCE-2K 18,5	18,5kW	MCE2-25 25	Enclosed Star Delta + Isolator
MCE-2K 22,0	22kW	MCE2-36 32	Enclosed Star Delta + Isolator
MCE-2K 30,0	30kW	MCE2-36 40	Enclosed Star Delta + Isolator
MCE-2K 37,0	37kW	MCE2-93 50	Enclosed Star Delta + Isolator
MCE-2K 45,0	45kW	MCE2-93 65	Enclosed Star Delta + Isolator
MCE-2K 55,0	55kW	MCE2-93 65	Enclosed Star Delta + Isolator
MCE-2K 75,0	75kW	MCE2-93 70	Enclosed Star Delta + Isolator
MCE-2K 90,0	90kW	MCE2-93 93	Enclosed Star Delta + Isolator
MCE-2K 110,0	110kW	O/Load + CT	Enclosed Star Delta + Isolator

- Pre-wired available in 400VAC - Other Voltages made up to order
- Enclosed types in IP55 Orange Mild Steel Enclosures (except Open type)
- Complete with Contactors, Thermal overload relay, Mechanical interlock, Timer & control devices (except Open type - No control devices, only wired to terminals.)

STAR DELTA STARTER - TYPE 3 - (ENCLOSED TYPE WITH PUSHBUTTONS)



Type 3

Part Number	400V kW	Overload Reference	Description
MCE-3K 5,5	5,5kW	MCE2-25 8,0	Enclosed Star Delta
MCE-3K 7,5	7,5kW	MCE2-25 10,0	Enclosed Star Delta
MCE-3K 11,0	11kW	MCE2-25 18	Enclosed Star Delta
MCE-3K 15,0	15kW	MCE2-25 18	Enclosed Star Delta
MCE-3K 18,5	18,5kW	MCE2-25 25	Enclosed Star Delta
MCE-3K 22,0	22kW	MCE2-36 32	Enclosed Star Delta
MCE-3K 30,0	30kW	MCE2-36 40	Enclosed Star Delta
MCE-3K 37,0	37kW	MCE2-93 50	Enclosed Star Delta
MCE-3K 45,0	45kW	MCE2-93 65	Enclosed Star Delta
MCE-3K 55,0	55kW	MCE2-93 65	Enclosed Star Delta
MCE-3K 75,0	75kW	MCE2-93 70	Enclosed Star Delta
MCE-3K 90,0	90kW	MCE2-93 93	Enclosed Star Delta
MCE-3K 110,0	110kW	O/Load + CT	Enclosed Star Delta

STAR DELTA STARTER - TYPE 4 - (ENCLOSED TYPE WITH AMMETER)



Type 4

MCE-4K 5,5	5,5kW	MCE2-25 8,0	Enclosed Star Delta + Ammeter
MCE-4K 7,5	7,5kW	MCE2-25 10,0	Enclosed Star Delta + Ammeter
MCE-4K 11,0	11kW	MCE2-25 18	Enclosed Star Delta + Ammeter
MCE-4K 15,0	15kW	MCE2-25 18	Enclosed Star Delta + Ammeter
MCE-4K 18,5	18,5kW	MCE2-25 25	Enclosed Star Delta + Ammeter
MCE-4K 22,0	22kW	MCE2-36 32	Enclosed Star Delta + Ammeter
MCE-4K 30,0	30kW	MCE2-36 40	Enclosed Star Delta + Ammeter
MCE-4K 37,0	37kW	MCE2-93 50	Enclosed Star Delta + Ammeter
MCE-4K 45,0	45kW	MCE2-93 65	Enclosed Star Delta + Ammeter
MCE-4K 55,0	55kW	MCE2-93 70	Enclosed Star Delta + Ammeter
MCE-4K 75,0	75kW	MCE2-93 70	Enclosed Star Delta + Ammeter
MCE-4K 90,0	90kW	MCE2-93 93	Enclosed Star Delta + Ammeter
MCE-4K 110,0	110kW	O/Load + CT	Enclosed Star Delta + Ammeter

STAR DELTA STARTER - TYPE 5 - (ENCLOSED TYPE WITH AMMETER AND ISOLATOR)

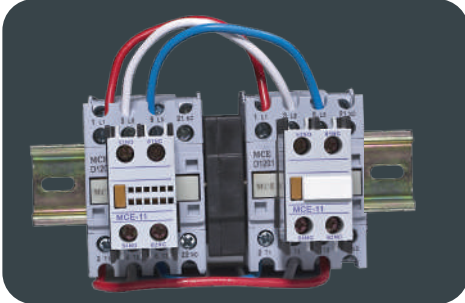


Type 5

MCE-5K 5,5	5,5kW	MCE2-25 8,0	Enclosed Star Delta + Ammeter + ISO
MCE-5K 7,5	7,5kW	MCE2-25 10,0	Enclosed Star Delta + Ammeter + ISO
MCE-5K 11,0	11kW	MCE2-25 18	Enclosed Star Delta + Ammeter + ISO
MCE-5K 15,0	15kW	MCE2-25 18	Enclosed Star Delta + Ammeter + ISO
MCE-5K 18,5	18,5kW	MCE2-25 25	Enclosed Star Delta + Ammeter + ISO
MCE-5K 22,0	22kW	MCE2-36 32	Enclosed Star Delta + Ammeter + ISO
MCE-5K 30,0	30kW	MCE2-36 40	Enclosed Star Delta + Ammeter + ISO
MCE-5K 37,0	37kW	MCE2-93 50	Enclosed Star Delta + Ammeter + ISO
MCE-5K 45,0	45kW	MCE2-93 65	Enclosed Star Delta + Ammeter + ISO
MCE-5K 55,0	55kW	MCE2-93 70	Enclosed Star Delta + Ammeter + ISO
MCE-5K 75,0	75kW	MCE2-93 70	Enclosed Star Delta + Ammeter + ISO
MCE-5K 90,0	90kW	MCE2-93 93	Enclosed Star Delta + Ammeter + ISO
MCE-5K 110,0	110kW	O/Load + CT	Enclosed Star Delta + Ammeter + ISO

- Pre-wired available in 400VAC - Other Voltages made up to order.
- Enclosed types in IP65 PVC Enclosure or Orange IP55 Mild Steel Enclosures (except open type)
- Complete with Contactors, Mechanical Interlock & Control devices (except Open type - No control devices, only wired to terminals.)
- **SUPPLIED WITHOUT OVERLOAD**

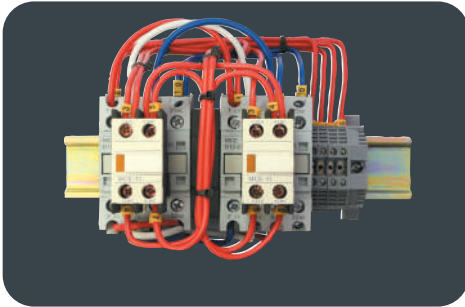
TYPE 1 REVERSING STARTERS - (OPEN TYPE) - MAINS WIRING ONLY - **NO OVERLOAD**



TYPE 1 REV.
STARTER:
Open type with
Mains wiring.

Part Number	kW @ 400V	HP @ 400V
MCER12T1	Up to 5,5kW	Up to 7,5HP
MCER18T1	7,5kW	10HP
MCER25T1	11kW	15HP
MCER32T1	15kW	20HP
MCER40T1	18,5kW	25HP
MCER50T1	22kW	30HP
MCER65T1	30kW	40HP
MCER80T1	37kW	50HP

TYPE 2 REVERSING STARTERS - (OPEN TYPE) - MAINS AND CONTROL WIRING ONLY - **NO OVERLOAD**



TYPE 2 REV.
STARTER:
Open Type
with Mains and
Control Wiring.

Part Number	kW @ 400V	HP @ 400V
MCER12T2	Up to 5,5kW	Up to 7,5HP
MCER18T2	7,5kW	10HP
MCER25T2	11kW	15HP
MCER32T2	15kW	20HP
MCER40T2	18,5kW	25HP
MCER50T2	22kW	30HP
MCER65T2	30kW	40HP
MCER80T2	37kW	50HP

TYPE 3 REVERSING STARTERS - (ENCLOSED TYPE) - 3 PUSHBUTTONS AND INTERNAL WIRING - **NO OVERLOAD**



TYPE 3 REV. STARTER:
Enclosed with Pushbuttons,
and wiring.

Part Number	kW @ 400V	HP @ 400V
MCER12T3	Up to 5,5kW	Up to 7,5HP
MCER18T3	7,5kW	10HP
MCER25T3	11kW	15HP
MCER32T3	15kW	20HP
MCER40T3	18,5kW	25HP
MCER50T3	22kW	30HP
MCER65T3	30kW	40HP
MCER80T3	37kW	50HP

TYPE 4 REVERSING STARTERS - (ENCLOSED TYPE) - 3 PUSHBUTTONS & INTERNAL WIRING & ISOLATOR - **NO OVERLOAD**



TYPE 4 REV. STARTER:
Enclosed with
Pushbuttons, wiring and
Isolator.

Part Number	kW @ 400V	HP @ 400V
MCER12T4	Up to 5,5kW	Up to 7,5HP
MCER18T4	7,5kW	10HP
MCER25T4	11kW	15HP
MCER32T4	15kW	20HP
MCER40T4	18,5kW	25HP
MCER50T4	22kW	30HP
MCER65T4	30kW	40HP
MCER80T4	37kW	50HP



FORWARD REVERSE SWITCHES

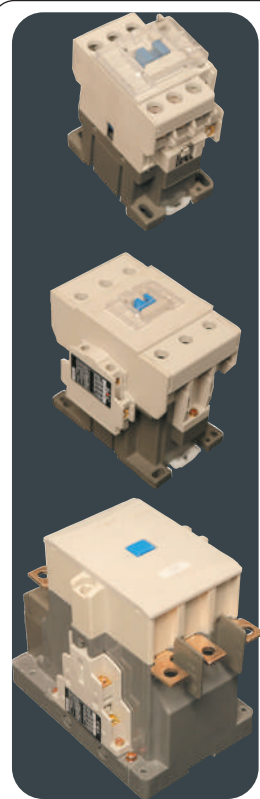
Part Number	Description	Dimensions	Current Rating
C10-08-11	3P Forward Reverse Switch	48x48	10Amps
C16-08-11	3P Forward Reverse Switch	48x48	16Amps
C20-08-11	3P Forward Reverse Switch	48x48	20Amps



- DIN rail mount - up to UKC1 85 only- rest are bolt on type.
- Price includes coil.
- Coil operating Frequency: 50 - 60Hz.

Available Coil Voltages AC ONLY. *Please Specify:

A=12V, B=24V, E=48V, F=110V, M=230V, Q=415V or T=525V. (AC ONLY)



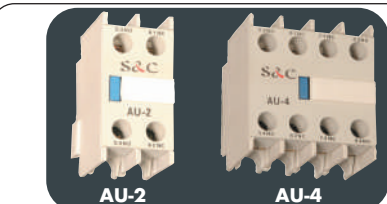
Part No:	Current Rating		400V		Auxiliary Contact	Dimensions (mm) H x W x D
	AC3	AC1	kW	HP		
3 POLE AC MAGNETIC CONTACTORS - AC COIL INCLUDED						
UKC1-9	9A	20A	4	5,5	1NO + 1NC	80 x 44 x 86
UKC1-12	12A	25A	5,5	7,5	1NO + 1NC	80 x 44 x 86
UKC1-18	18A	32A	7,5	10	1NO + 1NC	80 x 44 x 86
UKC1-22	22A	36A	11	15	1NO + 1NC	80 x 44 x 86
UKC1-32	32A	50A	15	20	1NO + 1NC	82 x 60 x 94
UKC1-40	40A	60A	18,5	25	1NO + 1NC	82 x 60 x 94
UKC1-50	50A	70A	22	30	1NO + 1NC	123 x 86 x 117
UKC1-65	65A	80A	30	40	1NO + 1NC	123 x 86 x 117
UKC1-75	75A	90A	37	50	1NO + 1NC	123 x 86 x 117
UKC1-85	85A	125A	45	60	1NO + 1NC	123 x 86 x 117
UKC1-100	100A	150A	55	75	1NO + 1NC	155 x 100 x 147
UKC1-125	125A	160A	55	75	1NO + 1NC	155 x 100 x 147
UKC1-150	150A	200A	75	100	1NO + 1NC	160 x 120 x 157
UKC1-180	180A	230A	90	125	1NO + 1NC	200 x 136 x 181
UKC1-220	220A	260A	110	150	1NO + 1NC	200 x 136 x 181



MECHANICAL INTERLOCK		
AR-9	Mechanical Interlock	UKC1-9 - 85
AR-100	Mechanical Interlock	UKC1-100 - 125 - 150
AR-180	Mechanical Interlock	UKC1-180 - 220



COILS	
UKX-9-40*	Coil suitable for UKC1-9 to UKC1-40
UKX-50-85-*	Coil suitable for UKC1-50 to UKC1-85
UKX-100-*	Coil suitable for UKC1-100 - 125 - 150
UKX-180-*	Coil suitable for UKC1-180-220
*24V, 48V, 110V, 230V, 400V, & 500V (AC ONLY)	



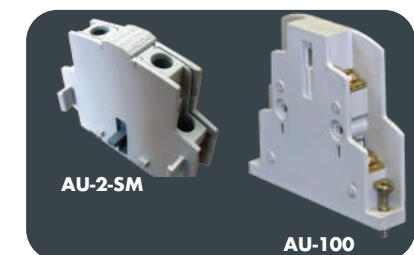
AUXILIARY CONTACT BLOCKS

AU-2 Top Mount Clip-on Auxiliary Block 1NO & 1NC
AU-4 Top Mount Clip-on Auxiliary Block 2NO & 2NC
 Suitable for contactors: UKC1-9 up to UKC1-85

AU-2-SM Side Mount Clip-on Auxiliary Block 1NO & 1NC
 Suitable for contactors: UKC1-9 up to UCK1-85

AU-100 Side Mount Screw-on Auxiliary Block 1NO & 1NC
 Suitable for contactors: UKC1-100 up to UKC1-220

AU-2M Top Mount Clip-on Auxiliary Block 1NO & 1NC
AU-4M Top Mount Clip-on Auxiliary Block 2NO & 2NC
 Suitable for mini contactors: UKC1-6M up to UKC1-16M



- DIN rail mount.
- Price includes coil.
- Coil operating Frequency: 50 - 60Hz.



4 POLE AC MAGNETIC CONTACTORS - AC COIL INCLUDED

Part No:	Current Rating		400V		Main Contacts	Dimensions (mm) H x W x D
	AC3	AC1	kW	HP		
UKC1-12004	12A	25A	5,5	7,5	4 NO	80 x 47.2 x 87
UKC1-18004	18A	32A	7,5	10	4 NO	80 x 47.2 x 87
UKC1-22004	22A	36A	11	15	4 NO	80 x 47.2 x 87



4 POLE AC MAGNETIC CONTACTORS - AC COIL INCLUDED

Part No:	Current Rating		400V		Main Contacts	Dimensions (mm) H x W x D
	AC3	AC1	kW	HP		
UKC1-32004	32A	50A	15	20	4 NO	124 x 59 x 95
UKC1-40004	40A	60A	18,5	25	4 NO	124 x 59 x 95



4 POLE AC MAGNETIC CONTACTORS - AC COIL INCLUDED

Part No:	Current Rating		400V		Main Contacts	Dimensions (mm) H x W x D
	AC3	AC1	kW	HP		
UKC1-50004	50A	75A	22	30	4 NO	124 x 91 x 118
UKC1-65004	65A	80A	30	40	4 NO	124 x 91 x 118



4 POLE AC MAGNETIC CONTACTORS - AC COIL INCLUDED

Part No:	Current Rating		400V		Main Contacts	Dimensions (mm) H x W x D
	AC3	AC1	kW	HP		
UKC1-75004	75A	90A	37	50	4 NO	124 x 91 x 118
UKC1-85004	85A	125A	45	60	4 NO	124 x 91 x 118

- Bi-metal thermal overload suitable for UKC1 Contactors
- Available in various amperages
- Mounts directly onto contact or free standing overload base
- Current transformer Overloads

SMALL FRAME - SUITABLE FOR UKC1 - 9 to 22 Amp CONTACTORS



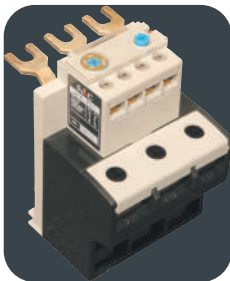
Part No:	Current Rating Amps	400V		Dimensions (mm) H x W x D
		kW	HP	
UKH-22-1,0	0,63-1,0	0,37	1/2	89 x 44 x 63
UKH-22-1,6	1,0-1,6	0,55	3/4	89 x 44 x 63
UKH-22-2,5	1,6-2,5	0,75	1	89 x 44 x 63
UKH-22-4,0	2,5-4,0	1,5	2	89 x 44 x 63
UKH-22-6,0	4,0-6,0	2,2	3	89 x 44 x 63
UKH-22-8,0	5-8	3,0	4	89 x 44 x 63
UKH-22-10,0	7-10	4,0	5	89 x 44 x 63
UKH-22-13,0	9-13	5,5	7,5	89 x 44 x 63
UKH-22-18,0	12-18	7,5	10	89 x 44 x 63
UKH-22-22,0	16-22	11	15	89 x 44 x 63

MEDIUM FRAME - SUITABLE FOR UKC1 - 32 to 40 Amp CONTACTORS



Part No:	Current Rating Amps	400V		Dimensions (mm) H x W x D
		kW	HP	
UKH-40-26,0	18-26	11	15	95 x 53 x 71
UKH-40-36,0	24-36	15	20	95 x 53 x 71
UKH-40-40,0	28-40	18,5	25	95 x 53 x 71

LARGE FRAME - SUITABLE FOR UKC1 - 50 to 85 Amp CONTACTORS



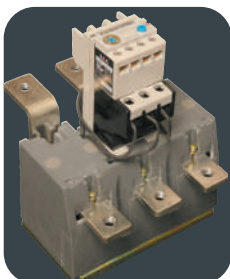
Part No:	Current Rating Amps	400V		Dimensions (mm) H x W x D
		kW	HP	
UKH-85-50,0	34-50	22	30	101 x 70 x 82
UKH-85-65,0	45-65	30	40	101 x 70 x 82
UKH-85-75,0	54-75	30	40	101 x 70 x 82
UKH-85-85,0	63-85	37	50	101 x 70 x 82

FREE STANDING OVERLOADS - SUITABLE FOR UKC1 - 100 to 220 Amp CONTACTORS



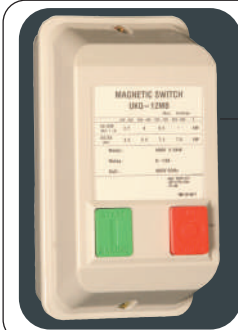
Part No:	Current Rating Amps	400V		Dimensions (mm) H x W x D
		kW	HP	
UKH-100-100	65-100	45	60	105 x 103 x 67
UKH-100-125	85-125	55	75	105 x 103 x 67
UKH-150-100	65-100	45	60	105 x 112 x 89
UKH-150-125	85-125	55	75	105 x 112 x 89
UKH-150-150	100-150	75	100	105 x 112 x 89

CURRENT TRANSFORMER OVERLOADS - SUITABLE FOR UKC1-100 to 220 Amp CONTACTORS



Part No:	Current Rating Amps	400V		Dimensions (mm) H x W x D
		kW	HP	
UKH-220-125	85-125	55	75	175 x 152 x 141
UKH-220-150	100-150	75	100	175 x 152 x 141
UKH-220-180	120-180	90	125	175 x 152 x 141
UKH-220-240	160-240	132	180	175 x 152 x 141

- Steel base
- Impact resistant engineering plastic cover.
- 50 - 60Hz.
- Suitable for Motor starting, pumps, etc.



DOL STARTER - NO OVERLOAD - IP54 ENCLOSURE

Part No:	400V		Dimensions H x W x D	Overload Reference
	kW	HP		
UKQ-12MB	5,5kW	7,5HP	177 x 90 x 136	No O/Load
UKQ-18MB	7,5kW	10HP	177 x 90 x 136	No O/Load
UKQ-22MB	11kW	15HP	177 x 90 x 136	No O/Load
UKQ-32MB	15kW	20HP	201 x 118 x 145	No O/Load



DOL STARTER - WITH OVERLOAD - IP54 ENCLOSURE

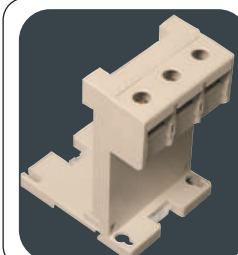
Part No:	400V		Dimensions H x W x D	Overload Reference
	kW	HP		
UKQ-12MB 1,0	0,37kW	1/2HP	177 x 90 x 136	0,63 - 1A
UKQ-12MB 1,6	0,55kW	3/4HP	177 x 90 x 136	1,0 - 1,6A
UKQ-12MB 2,5	1,1kW	1,5HP	177 x 90 x 136	1,6 - 2,5A
UKQ-12MB 4,0	1,5kW	2HP	177 x 90 x 136	2,5 - 4 A
UKQ-12MB 6,0	2,2kW	3HP	177 x 90 x 136	4,0 - 6A
UKQ-12MB 8,0	3,0kW	4HP	177 x 90 x 136	5 - 8A
UKQ-12MB 10	4kW	5HP	177 x 90 x 136	7 - 10A
UKQ-12MB 13	5,5kW	7,5HP	177 x 90 x 136	9 - 13A
UKQ-18MB 18	7,5kW	10HP	177 x 90 x 136	12 - 18A
UKQ-22MB 22	11kW	15HP	177 x 90 x 136	17 - 22A
UKQ-32MB 36	15kW	20HP	201 x 118 x 145	24 - 36A



PNEUMATIC TIMERS

UT-1F	Clip-on Pneumatic Timer - Delay off	0,1 - 30 seconds
UT-1N	Clip-on Pneumatic Timer - Delay on	0,1 - 30 seconds
UT-2F	Clip-on Pneumatic Timer - Delay off	10 - 180 seconds
UT-2N	Clip-on Pneumatic Timer - Delay on	10 - 180 seconds

Suitable for contactors: UKC1-9 to UKC1-85



OVERLOAD ACCESSORIES

AZ-22H	Free standing base for SMALL FRAME Overloads	UKH-22
AZ-40H	Free standing base for MEDIUM FRAME Overloads	UKH-40
AZ-85H	Free standing base for LARGE FRAME Overloads	UKH-85