



### SU BUSBAR HOLDERS - RATED UP TO 800A

**SU1**  
1 Pole Busbar Holder - Vertical  
Maximum size Busbar: 30 x 10 Busbar



### SU BUSBAR HOLDERS - RATED UP TO 800A

**SU2**  
2 Pole Busbar Holder - Stepped - Vertical  
Maximum size Busbar: 30 x 10 Busbar



### SU BUSBAR HOLDERS - RATED UP TO 800A

**SU3**  
3 Pole Busbar Holder - Straight - Vertical  
Maximum size Busbar: 30 x 10 Busbar



### SU BUSBAR HOLDERS - RATED UP TO 800A

**SU3-1**  
3 Pole Busbar Holder - Stepped - Vertical  
Maximum size Busbar: 30 x 10 Busbar



### SU BUSBAR HOLDERS - RATED UP TO 800A

**SUA-3**  
3 Pole Busbar Holder - Stepped - Horizontal  
Maximum size Busbar: 30 x 10 Busbar



### SU BUSBAR HOLDERS - RATED UP TO 800A

**SU3-A**  
Adjustable 3 Pole Busbar Holder - Vertical  
Maximum size Busbar: 30 x 10 Busbar



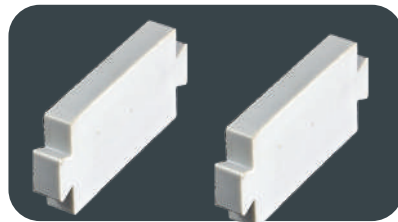
### SU BUSBAR HOLDERS - ACCESSORIES

**SU3-A-COVER**  
Cover for SU3-A Adjustable 3 Pole Busbar Holder - Vertical



### SU BUSBAR HOLDERS - RATED UP TO 800A

**SU4**  
4 Pole Busbar Holder - Straight - Vertical  
Maximum size Busbar: 30 x 10 Busbar



### INSERTS FOR BUSBAR HOLDERS

- SU20-5** Busbar size 20 x 5 - SU1, SU2, SU3, SU3-1 & SU4
- SU30-5** Busbar size 30 x 5 - SU1, SU2, SU3, SU3-1 & SU4
- SU20-10** Busbar size 20 x 10 - SU1, SU2, SU3, SU3-1 & SU4
- SU25-5** Busbar size 25 x 5 - SU1, SU2, SU3, SU3-1 & SU4



### BUSBAR CONNECTOR - FOR DIRECT CLAMPING ONTO BUSBAR

- |              |                                    |                            |
|--------------|------------------------------------|----------------------------|
| <b>SU201</b> | Wire Size: 1 - 4mm <sup>2</sup>    | Busbar Thickness: 4 - 5mm  |
| <b>SU202</b> | Wire Size: 2,5 - 16mm <sup>2</sup> | Busbar Thickness: 4 - 5mm  |
| <b>SU203</b> | Wire Size: 16 - 50mm <sup>2</sup>  | Busbar Thickness: 4 - 5mm  |
| <b>SU204</b> | Wire Size: 35 - 70mm <sup>2</sup>  | Busbar Thickness: 4 - 5mm  |
| <b>SU206</b> | Wire Size: 1 - 4mm <sup>2</sup>    | Busbar Thickness: 9 - 10mm |
| <b>SU207</b> | Wire Size: 2,5 - 16mm <sup>2</sup> | Busbar Thickness: 9 - 10mm |
| <b>SU208</b> | Wire Size: 16 - 50mm <sup>2</sup>  | Busbar Thickness: 9 - 10mm |
| <b>SU209</b> | Wire Size: 35 - 70mm <sup>2</sup>  | Busbar Thickness: 9 - 10mm |
| <b>SU300</b> | Wire Size: 70 - 185mm <sup>2</sup> | Busbar Thickness: 9 - 10mm |

### SLOTTED CABLE TRUNKING (for the protection of cables)

- Colour: RAL7030 Grey
- Insulating, Shock-proof, self extinguishing material in compliance with UL94 VO
- Resistant to flame & abnormally high temperature up to 960°C to IEC 60695-2-1 standard
- Dimensional Stability from -15°C to +60°C
- New rib profile eases cover opening and closing yet guarantees a more secure enclosure
- IMQ/ UL/ RINA/ CSA/ NF approved
- Standard 2m Length (Supplied with covers)



#### SLOTTED TRUNKING - 2m LENGTH (4mm Slot/ 6mm Tongue)

Code	Dimensions W x H	Description	Carton Quantity
<b>E20</b>	15x17	THERMOPLASTIC SLOTTED TRUNKING	60
<b>E164</b>	25x30	THERMOPLASTIC SLOTTED TRUNKING	40
<b>E134</b>	25x40	THERMOPLASTIC SLOTTED TRUNKING	30
<b>E84</b>	40x40	THERMOPLASTIC SLOTTED TRUNKING	20
<b>E44</b>	60x40	THERMOPLASTIC SLOTTED TRUNKING	12
<b>E74</b>	25x60	THERMOPLASTIC SLOTTED TRUNKING	20
<b>E54</b>	40x60	THERMOPLASTIC SLOTTED TRUNKING	18
<b>E94</b>	60x60	THERMOPLASTIC SLOTTED TRUNKING	12
<b>E64</b>	80x60	THERMOPLASTIC SLOTTED TRUNKING	12
<b>E144</b>	25x80	THERMOPLASTIC SLOTTED TRUNKING	16
<b>E154</b>	40x80	THERMOPLASTIC SLOTTED TRUNKING	12
<b>E114</b>	60x80	THERMOPLASTIC SLOTTED TRUNKING	12
<b>E124</b>	80x80	THERMOPLASTIC SLOTTED TRUNKING	12
<b>E194</b>	100x80	THERMOPLASTIC SLOTTED TRUNKING	8
<b>E354</b>	40x100	THERMOPLASTIC SLOTTED TRUNKING	8
<b>E184</b>	60x100	THERMOPLASTIC SLOTTED TRUNKING	8
<b>E364</b>	80x100	THERMOPLASTIC SLOTTED TRUNKING	8
<b>E374</b>	100x100	THERMOPLASTIC SLOTTED TRUNKING	8

#### SPARE COVERS (2m Lengths)

<b>GCOP15</b>	15mm	SPARE COVER FOR SLOTTED TRUNKING
<b>GCOP25</b>	25mm	SPARE COVER FOR SLOTTED TRUNKING
<b>GCOP40</b>	40mm	SPARE COVER FOR SLOTTED TRUNKING
<b>GCOP60</b>	60mm	SPARE COVER FOR SLOTTED TRUNKING
<b>GCOP80</b>	80mm	SPARE COVER FOR SLOTTED TRUNKING
<b>GCOP100-10</b>	100mm	SPARE COVER FOR SLOTTED TRUNKING

### FLEXIBLE WIRING DUCT

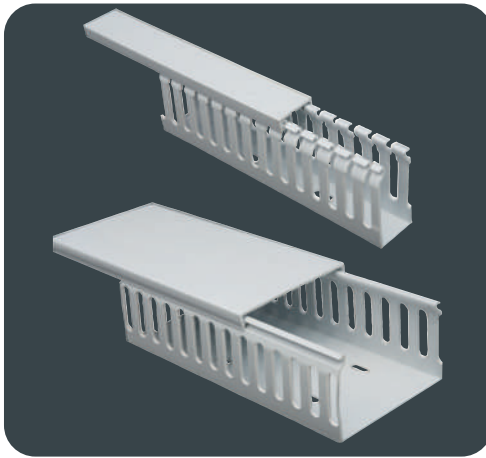
- No cover required
- Fasten by screw, rivets or self adhesive double sided tape (supplied)
- For connecting between panels & doors for cables subject to bending & twisting
- Colour: RAL7040 Grey
- Standard 500mm Length



#### FLEXIBLE WIRING DUCT (7,5mm Slot/ 5mm Tongue)

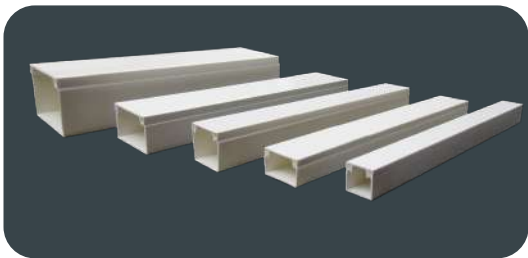
<b>FLX10</b>	12,5x12,5	FLEXIBLE WIRING DUCTING
<b>FLX20</b>	20x20	FLEXIBLE WIRING DUCTING
<b>FLX30</b>	30x30	FLEXIBLE WIRING DUCTING

### NARROW SLOT (4MM SLOT / 6MM TONGUE) - 2M LENGTHS



Part Number	Dimensions H x W x L	Colour
<b>ST-25 x 25</b>	25 x 25 x 2000mm	Grey
<b>ST-35 x 35</b>	35 x 35 x 2000mm	Grey
<b>ST-45 x 25</b>	45 x 25 x 2000mm	Grey
<b>ST-60 x 25</b>	60 x 25 x 2000mm	Grey
<b>ST-40 x 40</b>	40 x 40 x 2000mm	Grey
<b>ST-60 x 40</b>	60 x 40 x 2000mm	Grey
<b>ST-60 x 60</b>	60 x 60 x 2000mm	Grey
<b>ST-60 x 100</b>	60 x 100 x 2000mm	Grey
<b>ST-80 x 40</b>	80 x 40 x 2000mm	Grey
<b>ST-80 x 80</b>	80 x 80 x 2000mm	Grey
<b>ST-100 x 80</b>	100 x 80 x 2000mm	Grey
<b>ST-100 x 100</b>	100 x 100 x 2000mm	Grey

### SOLID WALL PVC TRUNKING



Part Number	H x W x L	Colour	Lengths/Bag
<b>SWT-16162</b>	16 x 16 x 2000mm	White	40
<b>SWT-25163</b>	25 x 16 x 2900mm	White	25
<b>SWT-40163</b>	40 x 16 x 2900mm	White	20
<b>SWT-40253</b>	40 x 25 x 2900mm	White	10
<b>SWT-40403</b>	40 x 40 x 2900mm	White	10
<b>SWT-100403</b>	100 x 40 x 2900mm	White	5

### FLOOR PVC TRUNKING

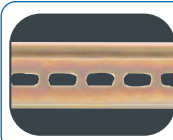


Part Number	H x W x L	Colour	Lengths/Bag
<b>ARC-50152</b>	50 x 15 x 2000mm	White	15
<b>ARC-70202</b>	70 x 20 x 2000mm	White	10
<b>ARC-90252</b>	90 x 25 x 2000mm	White	10



#### DIN RAIL

**TS35P-1**  
Plain Din Rail 1m length



#### DIN RAIL

**TS35S-1**  
Slotted Din Rail 1m length



#### DIN RAIL SUPPORT

**TS-S** Bolt-on Angled support  
**TS-F** Bolt-on Flat support

**NEW!**



### PVC GLUE

#### PVC-G200

- Ready to use
- Fast drying and setting
- Low odour formula
- Ideal viscosity (easily applied, minimal dripping)
- Brush supplied with 200ml bottle



### PANEL FAN

**100FZY-\*** Panel Fan with Grill **100mm** 18W  
Available in 110VAC OR 230VAC \*PLEASE SPECIFY

**125FZY-\*** Panel Fan with Grill **125mm** 25W  
Available in 110VAC OR 230VAC \*PLEASE SPECIFY

- Nylon 66 (UL Approved)
- UL Flammability 94V.2
- UV Treated

NEW!



**CT50RBK**



**CT50RNT**

### BLACK NYLON CABLE TIES

CODE	COLOUR	DIMENSIONS (L x W)	THICKNESS	PACK QTY
<b>CT18RBK</b>	Black	100 x 2,5mm	1mm	100
<b>CT30RBK</b>	Black	150 x 3,5mm	1,15mm	100
<b>CT50RBK</b>	Black	200 x 4,8mm	1,25mm	100
<b>CT50IBK</b>	Black	300 x 4,8mm	1,25mm	100
<b>CT50LBK</b>	Black	400 x 4,8mm	1,35mm	100
<b>CT120SBK</b>	Black	300 x 7,6mm	1,40mm	100
<b>CT120RBK</b>	Black	400 x 7,6mm	1,45mm	100

### NATURAL NYLON CABLE TIES

CODE	COLOUR	DIMENSIONS (L x W)	THICKNESS	PACK QTY
<b>CT18RNT</b>	Natural	100 x 2,5mm	1mm	100
<b>CT30RNT</b>	Natural	150 x 3,5mm	1,15mm	100
<b>CT50RNT</b>	Natural	200 x 4,8mm	1,25mm	100
<b>CT50INT</b>	Natural	300 x 4,8mm	1,25mm	100
<b>CT50LNT</b>	Natural	400 x 4,8mm	1,35mm	100
<b>CT120SNT</b>	Natural	300 x 7,6mm	1,40mm	100
<b>CT120RNT</b>	Natural	400 x 7,6mm	1,45mm	100

NEW!



**CTC2020B**



**CTC2020N**

### BLACK CABLE TIE CRADLES

CODE	COLOUR	DIMENSIONS (L x W)	TO FIT	PACK QTY
<b>CTC2020B</b>	Black	20 x 20mm	4mm	100
<b>CTC2525B</b>	Black	25 x 25mm	6mm	100
<b>CTC3030B</b>	Black	30 x 30mm	7mm	100
<b>CTC4040B</b>	Black	40 x 40mm	10mm	100

### NATURAL CABLE TIE CRADLES

CODE	COLOUR	DIMENSIONS (L x W)	TO FIT	PACK QTY
<b>CTC2020N</b>	Natural	20 x 20mm	4mm	100
<b>CTC2525N</b>	Natural	25 x 25mm	6mm	100
<b>CTC3030N</b>	Natural	30 x 30mm	7mm	100
<b>CTC4040N</b>	Natural	40 x 40mm	10mm	100

### NATURAL PLASTIC SPIRAL WRAPPING BANDS



CODE	COLOUR	INNER DIAMETER	BUNDLE DIAMETER	LENGTH
<b>SWB-6</b>	Natural	4mm	4-50mm	10m
<b>SWB-8</b>	Natural	6mm	6-60mm	10m
<b>SWB-10</b>	Natural	7,5mm	7,5-60mm	10m
<b>SWB-12</b>	Natural	9mm	9-65mm	10m
<b>SWB-15</b>	Natural	12mm	12-75mm	10m
<b>SWB-19</b>	Natural	15mm	15-100mm	10m
<b>SWB-24</b>	Natural	20mm	20-130mm	10m

NEW!

### BLACK PLASTIC SPIRAL WRAPPING BANDS



CODE	COLOUR	INNER DIAMETER	BUNDLE DIAMETER	LENGTH
<b>SWB-6-BK</b>	Black	4mm	4-50mm	10m
<b>SWB-8-BK</b>	Black	6mm	6-60mm	10m
<b>SWB-10-BK</b>	Black	7,5mm	7,5-60mm	10m
<b>SWB-12-BK</b>	Black	9mm	9-65mm	10m
<b>SWB-15-BK</b>	Black	12mm	12-75mm	10m
<b>SWB-19-BK</b>	Black	15mm	15-100mm	10m
<b>SWB-24-BK</b>	Black	20mm	20-130mm	10m

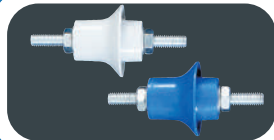
- Robust Dough Moulded Compound for high tensile strength
- Various colours
- Available with or without studs
- Ideal for separating busbars

### BUSBAR INSULATORS



Part Number	Tensile Strength	Studs	Voltage Withstand	Torque Strength	Screw Size
<b>S842-1</b>	700lbs	No Studs	8 kV	11 Nm	8mm

Available in Red, Blue, White or Black. \*Please specify. ● ○ ● ●



Part Number	Tensile Strength	Studs	Voltage Withstand	Torque Strength	Screw Size
<b>S842-3</b>	700lbs	8x22	8 kV	11 Nm	

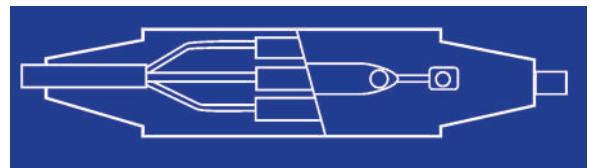
Available in Red, Blue, White or Black. \*Please specify. ● ○ ● ●



Part Number	Tensile Strength	Studs	Voltage Withstand	Torque Strength	Screw Size
<b>SM-25</b>	500lbs	No Studs	6 kV	7 Nm	6mm
<b>SM-30</b>	550lbs	No Studs	8 kV	9 Nm	8mm
<b>SM-35</b>	600lbs	No Studs	10 kV	11 Nm	8mm
<b>SM-40</b>	650lbs	No Studs	12 kV	13 Nm	8mm
<b>SM-51</b>	1000lbs	No Studs	15 kV	23 Nm	8mm
<b>SM-60</b>	1200lbs	No Studs	20 kV	40 Nm	10mm
<b>SM-76</b>	1500lbs	No Studs	25 kV	46 Nm	10mm

Available in Red, Blue, White or Black. \*Please specify. ● ○ ● ●

### CABLE JOINT KITS



#### KIT SELECTION GUIDE FOR STRAIGHT JOINTS

Product Code	Cable Size (mm <sup>2</sup> )	Min Cable OD (mm <sup>2</sup> )	Min Cable OD (mm <sup>2</sup> armoured)	Mould Length
	2,3 or 4 Core			
<b>CJK1</b>	1,5-4mm	6	20	185
<b>CJK2</b>	4-10mm	9	30	240
<b>CJK3</b>	10-16mm	17	34	270
<b>CJK4</b>	16-35mm	22	42	310
<b>CJK5</b>	35-50mm	28	54	400
<b>CJK6</b>	50-95mm	32	56	432
<b>CJK7</b>	95-150mm	38	65	550
<b>CJK8</b>	150-240mm	48	82	720